




THE CHOICE OF ENGINEERS

 Made in Germany



SYSTEMS for Electric**LAB** Electric**EDUCATION** Electric**WORKSHOP**

THAT IS WHAT WE ARE STANDING FOR

COMPANY TRADITION

hera is a part of the family-owned ZECH-Unternehmensgruppe. Mr. Manfred Zech, owner and CEO of hera has a special interest in manufacturing all important key components within our company group to make sure, that only products of highest quality reach our customers. The success of this policy is reflected in the constant growth of the ZECH-Unternehmensgruppe within the 60 years after foundation. hera is equipped with machinery of latest technology which gives us a great manufacturing depth and thus the flexibility to even realize customized solutions. We are proud that so many educational institutions and industries around the world trust in our quality.

DURABILITY AND SUSTAINABILITY

In 1959 our LS2000 laboratory system was revolutionary, it was the first available bench rack system on the market with integrated devices for electric professions. Many of those first-generation systems are still in operation at customer-site and still add-ons are demanded. So, we not only provide full service for this products, but still we manufacture these, of course in latest technology.

MODULARITY OF PRODUCTS

Our furniture is made to last a lifetime, so we are dedicated to develop and manufacture products only of finest quality and durability. Due to the considerable product range and the high-degree of modularity, we are able to realize configurations that fully meet our customers concepts. We do not want you to adapt to our systems but our system should be adapted to you.

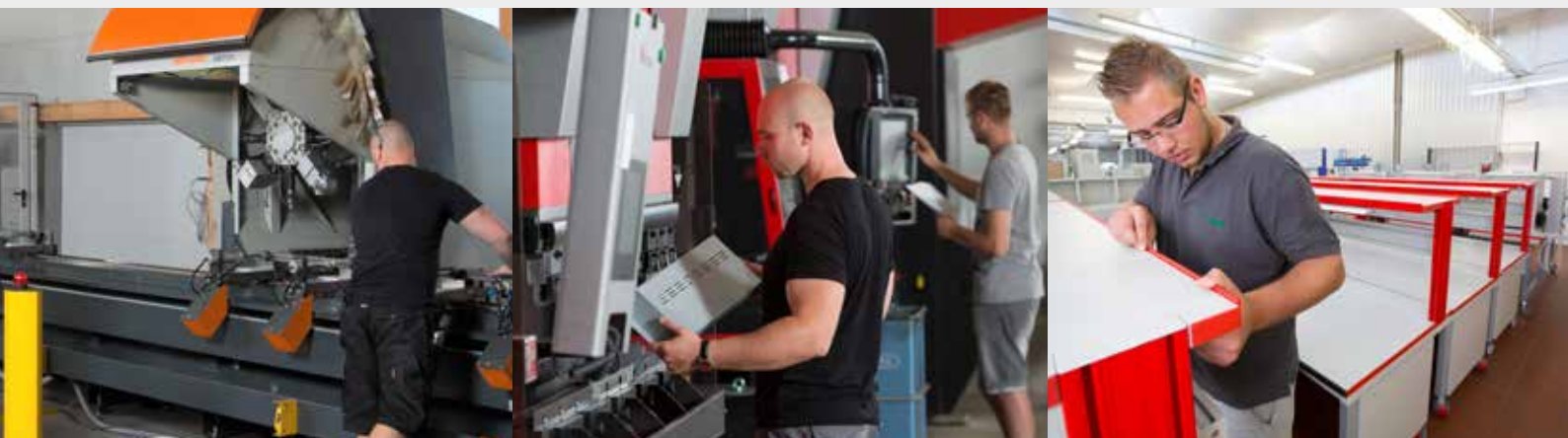
FUNCTIONALITY COMPLYING WITH DESIGN

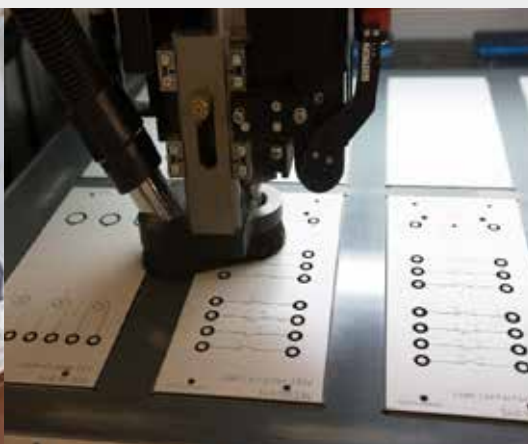
Attractive product design is a very important topic for hera, but never if it compromises functionality. Quite contrary, our policy is to make products even more user-friendly. This means, functionality is the main priority when developing new products or doing product redesigns, because we know how important it is to get your processes even more efficient.

COMPATIBILITY OF PRODUCT SOLUTIONS

A complete laboratory system consists of a great variety of individual components. In order to avoid confusion, whenever you need additional products, we consequently make sure that all our new developments are compatible to the present system. Thus an uncomplicated upgrade of your existing system is always guaranteed.

- YOUR HAPPINESS IS OUR SATISFACTION!





NO NEED FOR COMPROMISES

No matter if you prefer the steel-basing EASY system, the aluminium-basing PROFI system, a single - or team workstation, it will always be the right choice. Each solution is extraordinary solid and made to last a lifetime. The combination possibilities are endless and made to adapt your requirement. We help you to realize your ideas - there is no need for compromises.



PROFI Laboratory in ESD with Media Channel and Supporting Frames for Training Systems



Team Workstation with electrically retractable Energy Board
in 2 steps (1phase and 3phase level)



EASY Mechanical Workstations with detachable stainless steel worktops and movable Training System Frames

MOBILES AND CARTS

In accordance with our benches we offer a great variety of mobile solutions. The mobiles have the same modularity and can be configured exactly to your demands. This is especially useful if the training equipment is only occasionally used or needed in different classrooms.



PROFI Mobile for programming tasks



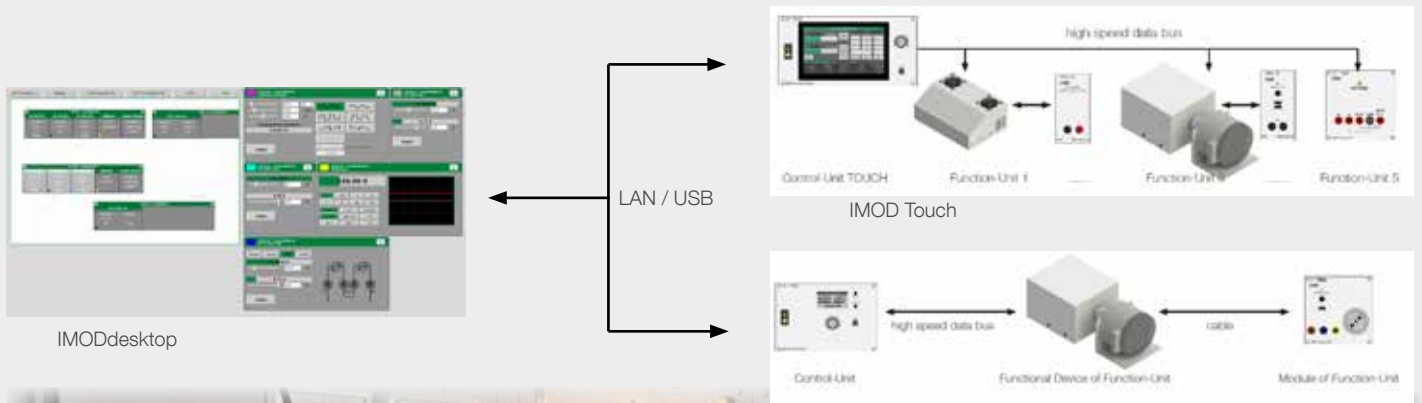
PROFI Mobile with modular media channel



Mobile Workstation with modular supply channel and support for training systems

ELECTRIC CLASSROOM EQUIPMENT

Networking classrooms are getting more and more state of the art. Our IMOD device series with USB interface is predestined for this. It can be easily connected to PCs and due to the web-basing software IMODdesktop it can be centrally controlled from the instructor's workstation, which means e.g. voltage and current can be limited for the whole room.





Exemplary Configuration for an Automation Laboratory

A4 TRAINING SYSTEMS FOR ELECTRONIC PROFESSIONS

You would like to equip a technical school or training center where different electric or electronic professions should be taught? - here is at your side and offers multi-disciplinary support. No matter if basics of electronics, electrical installations, control and automation technology or renewable energies, we offer clearly arranged training systems to all these and much more topics. All training systems offer possibilities for multiple set-ups, which allow the students to try out different ways. In total you can choose from more than 150 different training systems with ergonomically tilted hoods, which can be either used suspended in training system frames or directly on the bench top. The training systems help you to implement effective and active lessons basing on your curriculum.



basic electronics,
analogue and digital
technology and
power electronics



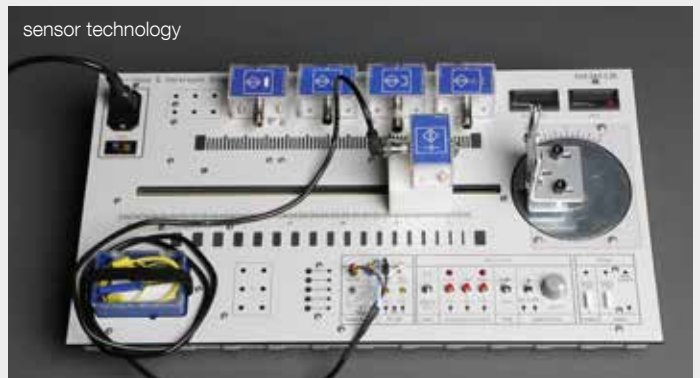
PID control engineering and controlled systems



microcontroller – and network technology



sensor technology



transformers



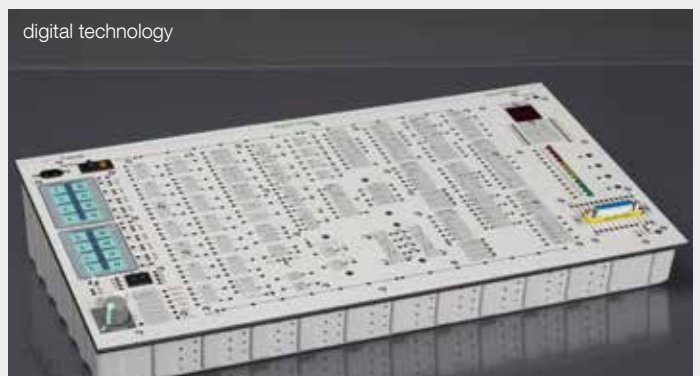
installation technology and electrical safety measures



control engineering



digital technology



AUTOMATION TECHNOLOGY AND MECHATRONICAL SYSTEMS

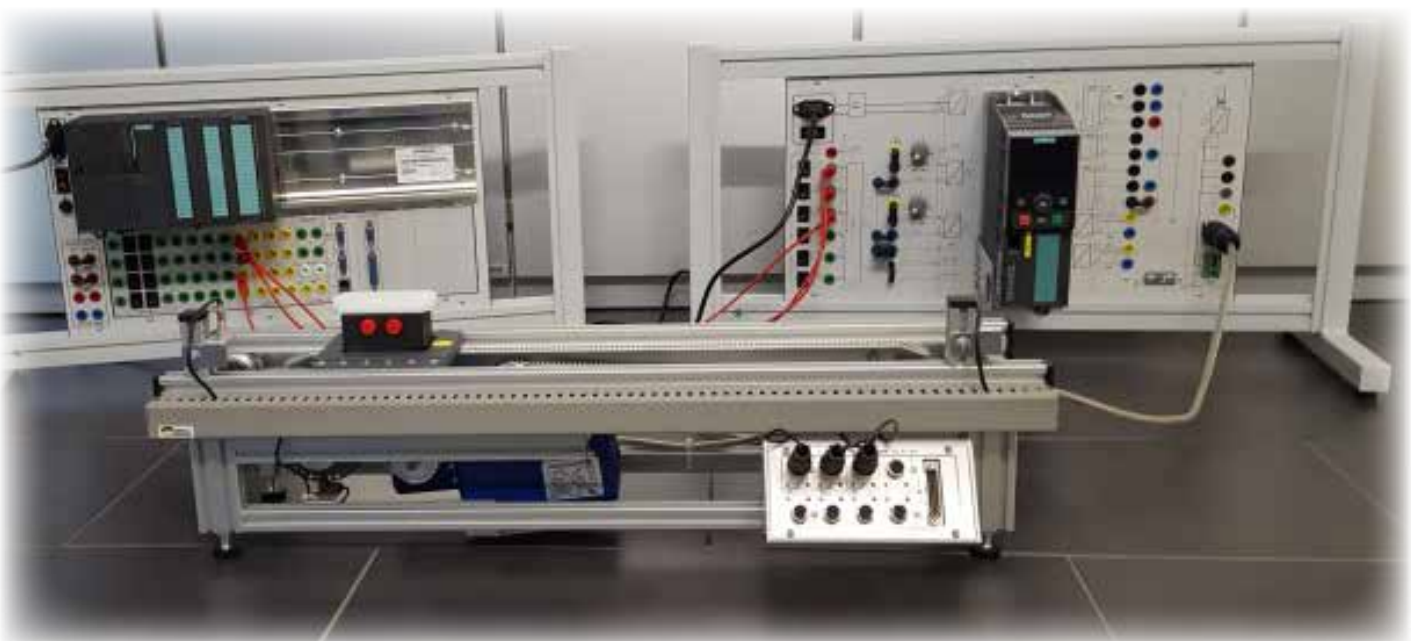
Future mechatronic engineers have to learn quite a lot. We offer a sensor test panel where students learn about the characteristics of industrial sensors as well as first applications for the control of DC motors, AC motors and servo motors. Learn how to program a HMI and different interfaces or start up frequency converter. All our systems base on Siemens SIMATIC and come with manuals and exemplary programs.



Mechatronic System COMPACT with SIEMENS S7-1200



Simenes S7-1200 with KTP700



Conveyor with 3phase AC Motor, Frequency G120 and PLC Panel

TRAINING SYSTEMS FOR RENEWABLE ENERGIES

Renewable energy can be generated in many ways. For this reason future experts need a wide range of specific knowledge. here covers this task with training systems for grid-connected and isolated photovoltaic systems, thermal solar systems, heat pump technology, wind power technology and many more. All simulations are indoor-experiments with original components of real systems. The training stands have measuring sockets at all relevant points and training boxes are transparent and offer a good view to the inner. This is for an even more efficient comprehension.



Thermal Solar



Heat Pump Air - Water



Photovoltaics Mobile equipped with components grid-feeding and standalone tests



Wind Power Panel, simulator with realistic parameters

PERFORATED GRID WALLS & DIDACTBOXES

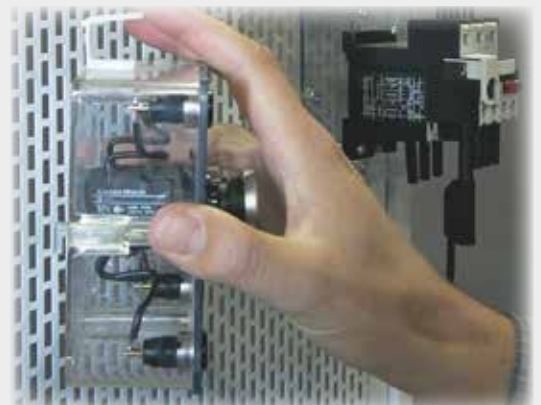
If you prefer transparent didact boxes and test leads instead of closed compact panels you can choose between mobiles, installation cabins, bench set-ups or wall mounted installation grids. The didact boxes have replacable plastic hooks and locks. You can see the components and functionality due to transparency, the boxes can be opened and thus are repairable.



Mobile solution with 19" drawers and installation wall, sides with foldable extensions for variable use



Installation walls for PROFI Benches



Hooks and locks replacable



Installation cabins with modular media supply and installation grids



... or replacable wooden walls



INDUSTRIAL APPLICATIONS

hera Laborsysteme GmbH is not only specialized in educational equipment but also in industrial applications. If you need service - and test workstations, calibration workstations or workshop systems in standard or ESD - we are your competent partner. Ask for more informations.



IMOD devices and IMODdesktop software is also used in industrial applications



Networking IMOD Device Series with central Control Unit Touch in electrical test bench



PROFi Bench with ENERGY Extensions and System Rack



PROFi Bench for electrical tests and analogue pressure calibrator

MORE OF HERA:



Website
www.hera.de/en/



Your sales partner
www.hera.de/en/contact/your-sales-partner.html



Catalogue
hera.de/en/service/catalogues.html



Videos
www.hera.de/en/service/videos.html

WE ARE THERE FOR YOU!

If you have any questions to our products or our services, please do not hesitate to contacting us.

Representative

hera Laborsysteme GmbH

Hermann-Rapp-Str. 40 | DE-74572 Blaufelden | Tel. +49 7953 882-0 | Fax +49 7953 1295 | sales@hera.de | www.hera.de