



## CHAPTER 5: FLEX WORKSHOP SYSTEM

- |            |   |            |  |
|------------|---|------------|--|
| <b>136</b> | Base for Height Adjustable Workshop Bench | <b>150</b> | FIFO Shelf                               |
| <b>138</b> | Base for C-Lift Workshop Bench            | <b>152</b> | Perforated Backplane                     |
| <b>139</b> | Option Mobile Workshop Bench              | <b>153</b> | Bin Bar                                  |
| <b>141</b> | Base for EASY Workbench                   | <b>154</b> | Overhead Frame                           |
| <b>142</b> | Bench Top                                 | <b>155</b> | Overhead Lamp and Multifunctional Lamp   |
| <b>143</b> | Foot Rest                                 | <b>156</b> | Swivel Arm                               |
| <b>144</b> | PC Support and Bench Enlargement          | <b>158</b> | Bottle Holder, Tool Holder and Turntable |
| <b>145</b> | FLEX Upright Sections                     | <b>160</b> | Transfer System                          |
| <b>146</b> | Backplane for Socket Strip                | <b>161</b> | Heavy Duty Roller and Roller Strip       |
| <b>147</b> | Shelf and Swivel Shelf                    | <b>162</b> | Stopper and Ball Roller                  |
| <b>148</b> | FIFO Swivel Shelf and Functional Shelf    |            |  |

## BASE FOR FLEX WORKSHOP BENCH

- Solid cantilever base, manually height adjustable between 690 - 1150mm in 20mm raster.
- Two cantilever legs made of sheet steel with metal levelling feet.
- Surrounding bench frame made of tubular steel. Rear side prepared for the acceptance of the cross brace.



### ESD Version:



- Sheet steel parts with durable conductive powder coating in light grey.



Base for FLEX Workshop Bench

116 . **BB** **T** .00 **V**

#### **BB** Width

<b>08</b>	800mm	<b>12</b>	1200mm	<b>16</b>	1600mm
<b>09</b>	900mm	<b>13</b>	1295mm	<b>18</b>	1800mm
<b>10</b>	1000mm	<b>15</b>	1500mm	<b>20</b>	2000mm

#### **T** Depth

<b>6</b>	600mm
<b>7</b>	700mm
<b>8</b>	800mm

#### **V** Version

<b>0</b>	manual height adjustment
<b>5</b>	for hydraulic height adjustment

## FLEX CROSS BRACE

- Rear sided brace for a stable 2-point-connection of the FLEX Upright Sections, also serves as cable tray.
- With keyhole perforation for the flexible fixation of a foot rest and a PC support.
- Made of sheet steel with durable conductive powder coating in light grey.
- Dimensions: 140 x 70mm (HxD).



FLEX Cross Brace

116. **BB** 0.010

#### **BB** Width

<b>08</b>	800mm	<b>12</b>	1200mm	<b>16</b>	1600mm
<b>09</b>	900mm	<b>13</b>	1295mm	<b>18</b>	1800mm
<b>10</b>	1000mm	<b>15</b>	1500mm	<b>20</b>	2000mm

## CONTINUOUS FOOTREST FOR FLEX WORKSHOP BENCH



- For the height- and tilt-variable assembly to the sheet steel legs.
- Made of sheet steel with durable conductive powder coating in light grey.
- Depth: 300mm.

Continuous Footrest				116. BB 0.050
BB Width				
08	800mm	12	1200mm	16 1600mm
09	900mm	13	1295mm	18 1800mm
10	1000mm	15	1500mm	20 2000mm



## OPTION HYDRAULIC LIFTS FOR FLEX WORKSHOP BENCHES

- For this option, the C-shaped base of the FLEX bench is replaced by two hydraulic lifts. Those lifts are available either for hand crank or electric operation.
- Height adjustment between 750 - 1150mm (lifting height hand crank: 400mm / electric: 380mm).
- Lifting force: 3000N.
- Two anodized aluminium legs with slots, parallel guidance and integrated lifting cylinder.
- Central 2-chamber hydraulic pump for synchron operation, installed under the bench top.
- Complete set of hoses installed in the bench legs.
- Up - and down button for the electric version are ergonomically installed at the front.
- The hand crank for the manual version can be folded under the bench top.

Option Hydraulic Lifts for FLEX Workshop Bench		
191.065.500	Hand Crank	5mm/U Lifting Speed
191.066.500	Electric	15mm/s Lifting Speed



Sitting Height



Standing Height

## OPTION C-LIFT BASE FOR FLEX BENCH

- Height adjustable between 700 - 1150mm (stroke: 450mm), from floor to upper side of bench frame (without bench top).
- Heavy duty lifts made of anodized aluminium profile with spindle drive. Profile dimensions: 60 x 240mm.
- With 6 surrounding T-slots for the acceptance of various accessory (e.g. PC support, etc.).
- Fully synchronized and hiddenly mounted under the bench top with invisible cable run between control unit, control box and lifts. Variably programmable end positions and anti-collision function (programmable shut-off force, in case of collision with stop and reverse function).
- Surrounding bench frame made of tubular steel. Rear side with cross brace for a solid 2-point-fixation of the FLEX Upright Sections. The cross brace can also serve as cable tray (dimensions: 140 x 70mm).
- Nicely shaped cantilever base with leveling screws.
- All steel parts are durable conductive powder coated in light grey.
- Please choose the bench top separately!



Option C-Lift Base for FLEX Bench

1 TT BBB.720

TT Depth	BBB Width			Lifts	Force	Speed
06 550mm	060 600mm	126 1260 mm	160 1600mm	410.003.160	2x 800N	max. 18mm/s
10 750mm	080 800mm	129 1295mm	180 1800mm	410.003.320	2x 2000N	max. 9mm/s
11 850mm	090 900mm	148 1485mm	200 2000mm	410.003.321	2x 2000N	max. 18mm/s
12 950mm	100 1000mm	150 1500mm	230 2303mm	410.003.640	2x 3200N	max. 9mm/s
	120 1200mm					



Sitting Height



Standing Height

## MOBILE C-LIFT BASE FOR FLEX WORKSHOP BENCH

For mobile C-lift bench please choose C-lift base from previous page and select from following options:

- Lifts with reduced lifting height of 350mm.
- Set of 100mm steering casters (2x position lock, 2x brake).
- Load capacity: max. 300kg.
- Bench height: 730mm - 1080mm.

### Option Mobile C-Lift Bench (E: 7=Standard / 8=ESD)

<b>410.003.16E</b>	Stroke: 350mm / 2x 800N / 18mm/s
<b>410.003.32E</b>	Stroke: 350mm / 2x 2000N / 9mm/s
<b>410.003.33E</b>	Stroke: 350mm / 2x 2000N / 18mm/s
<b>410.003.00E</b>	Lift Shells without Lifting Mechanism



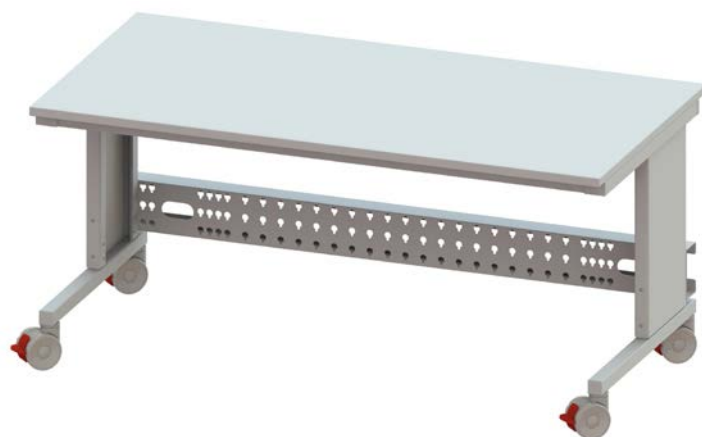
## OPTION CASTERS FOR FLEX WORKSHOP BENCH (WITHOUT LIFTS)

The option „with casters“ for all FLEX workbenches with manual height adjustment consists of:

- Cantilever base with short bench legs to maintain the standard bench height of 780mm.
- Set of twin casters DESIGN (100mm), two with brakes and two with position lock.
- Load capacity: max. 300kg.

### Option Casters for FLEX Workshop Bench

<b>191.070.000</b>	Standard
<b>191.070.500</b>	ESD



## THE COMBINATION OF **EASY AND FLEX**

The basic elements of the FLEX Workshop System can be combined with the EASY benches or the FLEX benches. With respect to your selection the configuration offers different options e.g. manual or hydraulic height adjustment.



## BASE FOR EASY BENCH

- Solid 4-leg base, height: 750mm.
- Closed bench frame made of 40 x 40mm tubular steel.
- Four bench legs made of 40 x 40mm tubular steel with floor leveling screws and torsion-resistant corner joints.
- All steel parts with durable conductive powder coating in light grey.



Base for EASY Bench 1 TT . BBB .520

### TT Depth

06	550mm
10	750mm
11	850mm
12	950mm

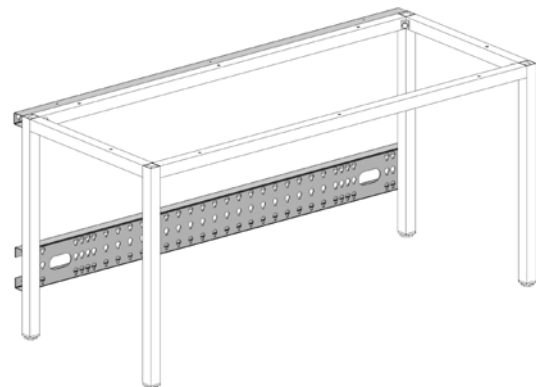
### BBB Width

060	600mm	126	1260 mm	160	1600mm
080	800mm	129	1295mm	180	1800mm
090	900mm	148	1485mm	200	2000mm
100	1000mm	150	1500mm	230	2303mm
120	1200mm				

FLEX Cross Brace for EASY Bench 116. BB 0.510

### BB Width

08	800mm	12	1200mm	16	1600mm
09	900mm	13	1295mm	18	1800mm
10	1000mm	15	1500mm	20	2000mm



## MELAMINE RESIN COVERED BENCH TOPS

- Melamine resin covered 3-layer chipboard (no hardlaminated surface!).
- All sides with PP plastic edge.
- Customized dimensions (max. 2700 x 2000mm).

### ESD Version:

- Volume - and surface conductive 3-layer chipboard according to DIN-EN 61340-5-1.



Melamine Resin Covered Bench Top 10 A .0 ST . F 00

### A Version

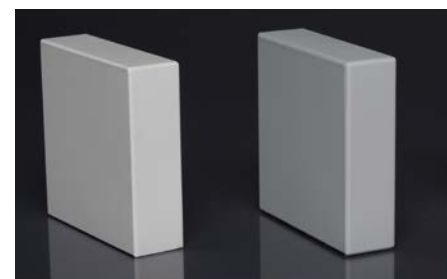
1	Standard
8	ESD 

### ST Thick

08	8mm
19	19mm
25	25mm
00	28mm

### F Color

5	light grey
8	white
9	maple / beech (not in ESD)




white

light grey

## HARDWEARING HARDLAMINATED BENCH TOP

- Hardwearing 3-layer chipboard with hardlaminated surface (multilayer chipboard according to DIN EN ISO 13894-1. Upper side with 0,8mm HPL hardlamine according to DIN EN 438-2).
- All sides with 3mm PP plastic edge.
- Thickness: 30mm.

Hardlaminated Bench Top		10	A	.000.	F	00
A	Version	F	Color			
0	Standard	5	light grey			
7	ESD 	8	white			
		9	maple / beech (not in ESD)			

### ESD Version:

- Volume - and surface conductive 3-layer chipboard, according to DIN-EN 61340-5-1.



ESD

hardlaminated

directly covered

## MECHANICAL BENCH TOPS

- Multiplex - or solid timber tops made of beech.
- Multiple sanded, laquered or oiled.
- All edges chamfered.

Mechanical Bench Tops		10	A	0	ST	.000
A	Version	ST	Thick			
4	Beech Multiplex	20	20mm (only multiplex)			
5	Solid Beech	30	30mm			
		40	40mm			
		50	50mm (only solid beech)			



Solid Beech

Beech Multiplex


## BENCH TOPS WITH BEVELLED FRONT EDGE

- Hardlaminated bench tops with bevelled front edges or PROFitec edge (impact proofed and replacable front edge made of solid plastics in 10mm radius).
- All other sides with 3mm PP plastic edge.
- Customized dimensions (max. 3600 x 1100mm).
- Thick: 30mm.
- Color: light grey.

### ESD Version:

- Volume - and surface conductive 3-layer chipboard, according to DIN-EN 61340-5-1.



Bench Tops with Bevelled Front Edge		10	A	0	V	0.500
A	Version	V	Front			
0	Standard	1	PROFitec			
7	ESD 	2	P26 Edge			
		4	70mm Drop Edge			



3mm PP plastic edge

P26 edge

PROFitec edge

70mm drop edge

## FLEX FOOTREST



- Suspended footrest for attachment to the FLEX cross brace.
- Tilttable in four positions (0° / 9° / 18° / 27°) for ergonomic sitting.
- Made of sheet steel, durable conductive powder coated in light grey.

FLEX Footrest		116.3	B	T	.000
B	Width	T Depth			
4	400mm	3	300mm		
5	500mm	4	400mm		
6	600mm	5	500mm		
7	700mm				



## FLEX BRACES FOR FOOTREST (PAIR)

- For the height adjustable attachment to the FLEX cross brace.
- Two braces with keyhole perforation in 50mm raster.
- Made of sheet steel, durable conductive powder coated in light grey.
- Dimensions: 70 x 40mm (WxD).

FLEX Braces for Footrest (Pair)			
116.302.000	H: 200mm	116.304.000	H: 400mm
116.303.000	H: 300mm	116.305.000	H: 500mm



## FLEX L-SUPPORT FOR FOOTREST (STANDING)

- Two L-braces with metal leveling feet and cross stiffener.
- Height adjustable due to slotted perforation (raster: 50mm).
- Dimensions: 300 x 400mm (DxH).
- Made of sheet steel, durable conductive powder coated in light grey.

FLEX L-Support for Footrest (Standing)			
116.404.000	W: 400mm	116.406.000	W: 600mm
116.405.000	W: 500mm	116.407.000	W: 700mm



## PC SUPPORT FOR FLEX WORKSHOP BENCH



- Suspended PC support for the attachment to the FLEX cross brace.
- Width adjustment: 135 / 160 / 185 / 210 / 235mm.
- Made of sheet steel, durable conductive powder coated in light grey.



PC Support for FLEX Workshop Bench 191.080.000

## BENCH ENLARGEMENT, FOLDABLE AND TELESCOPIC

- Solid bench enlargement made of sheet steel with swivel mechanics and telescopic rails for the attachment to the side of the FLEX bench.
- The enlargement can be folded down and fixed with screw handle if not in use.
- 2x telescopic guides, extension length: 600mm.
- Bench top not included.
- Width: 300mm.



Bench Enlargement,  
foldable and telescopic 191.090.500

► see page 142 for suitable bench tops



FLEX UPRIGHT SECTION (PAIR)

- Two braces with 3-sided keyhole perforation, raster 50mm for flexible configuration possibilities.
- Made of sheet steel, durable conductive powder coated in light grey.
- Dimensions: 70 x 40mm (WxD).

for rear side assembly to the cross brace:

- total length = height above bench top + 650mm

for bench top assembly in L-form:

- with solid angled brackets, 300mm reach



FLEX Upright Sections for Cross Brace				140.0	HH.000
HH Height above bench top					
03	300mm	08	800mm	12	1200mm
04	400mm	09	900mm	13	1300mm
05	500mm	10	1000mm	14	1400mm
06	600mm	11	1100mm	15	1500mm
07	700mm				

FLEX Brace in L-Form				140.0	HH.500
HH Height above bench top					
03	300mm	08	800mm	12	1200mm
04	400mm	09	900mm	13	1300mm
05	500mm	10	1000mm	14	1400mm
06	600mm	11	1100mm	15	1500mm
07	700mm				

BRUSH STRIP (PAIR)

- For hidden cable runs within the FLEX brace with flexible cable outlet.

Brush Strip (Pair)				140.0	HH.100
HH Height above bench top					
03	300mm	08	800mm	12	1200mm
04	400mm	09	900mm	13	1300mm
05	500mm	10	1000mm	14	1400mm
06	600mm	11	1100mm	15	1500mm
07	700mm				

## FLEX BACKPLANE FOR SOCKET STRIP „INDUSTRY“

- Budgetary solution for workbench electrification. Suitable for socket strip „Industry“, type F sockets.
- Mounted between the FLEX upright sections.
- Made of sheet steel, durable conductive powder coated in light grey, with openings for cable access.
- Dimensions: 46 x 76mm (DxH).



### Suitable Socket Strip „Industry“, Type F:

- Silver colored plastic housing with black sockets, type F (45° positioned).
- Black power cable (H05VV-F 3G 5W), 2m with angled plug.
- Illuminated 2poles switch, 16A.
- Dimensions: 70 x 45mm (WxH).



FLEX Backplane for Socket Strip „Industry“				141.1 BB.000
BB Width				
05	360mm	10	860mm	16 1460mm
06	460mm	12	1060mm	18 1660mm
08	660mm	13	1155mm	20 1860mm
09	760mm	15	1360mm	

Socket Strip „Industry“, Type F	
293.204.100	4fold with switch (L: 355mm)
293.206.100	6fold with switch (L: 440mm)
293.209.100	9fold with switch (L: 570mm)
293.212.100	12fold with switch (L: 700mm)

## FLEX SOCKET STRIP

- Reconnectable socket strip made of durable plastic with mounting flanges at the sides.
- Power cable H05VV-F3G.
- Illuminated 2poles switch, 16A.
- Dimensions: 56 x 41mm (WxH).
- Type F (others on demand).



FLEX Socket Strip, Type F			
293.630.000	3fold (L:185) white no Cable	293.660.000	6fold (L:340) white no Cable
293.630.001	3fold (L:185) black no Cable	293.660.100	6fold (L:340) white with 1,5m Cable
293.630.100	3fold (L:185) white with 1,5m Cable	293.660.101	6fold (L:340) black with 1,5m Cable
293.630.101	3fold (L:185) black with 1,5m Cable	293.660.300	6fold (L:340) white with 3,0m Cable
293.630.300	3fold (L:185) white with 3,0m Cable	293.660.301	6fold (L:340) black with 3,0m Cable
293.630.301	3fold (L:185) black with 3,0m Cable	293.660.500	6fold (L:340) white with 5,0m Cable
293.630.302	3fold (L:185) red with 3,0m Cable	293.660.501	6fold (L:340) black with 5,0m Cable
293.630.500	3fold (L:185) white with 5,0m Cable	293.661.000	6fold (L:340) white no Cable with Switch
293.630.501	3fold (L:185) black with 5,0m Cable	293.661.100	6fold (L:340) white with 1,5m Cable with Switch
293.640.000	4fold (L:288) white no Cable	293.661.101	6fold (L:340) black with 1,5m Cable with Switch
293.640.100	4fold (L:288) white with 1,5m Cable	293.661.300	6fold (L:340) white with 3,0m Cable with Switch
293.640.101	4fold (L:288) black with 1,5m Cable	293.661.301	6fold (L:340) black with 3,0m Cable with Switch
293.641.000	4fold (L:288) white no Cable with Switch	293.661.500	6fold (L:340) white with 5,0m Cable with Switch
293.641.100	4fold (L:288) white with 1,5m Cable with Switch	293.661.501	6fold (L:340) black with 5,0m Cable with Switch
293.641.101	4fold (L:288) black with 1,5m Cable with Switch		

## FLEX SHELF



- Shelf for the flexible assembly to the FLEX upright sections.
- Made of sheet steel, durable conductive powder coated in light grey.

FLEX Shelf 140.1 **BB.0** **T 0**

**BB** Width

**T** Depth

05	500mm	13	1295mm	3	300mm
06	600mm	15	1500mm	4	400mm
08	800mm	16	1600mm		
09	900mm	18	1800mm		
10	1000mm	20	2000mm		
12	1200mm				



## FLEX SWIVEL SHELF



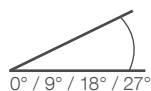
- Swivel shelf for the assembly to the FLEX upright section.
- Front edge with 20mm stop edge.
- Tiltable in four steps (0° / 9° / 18° / 27°).
- Made of sheet steel, durable conductive powder coated in light grey.

FLEX Swivel Shelf 140.2 **BB.0** **T 0**

**BB** Width

**T** Depth

05	430mm	13	1225mm	3	300mm
06	530mm	15	1430mm	4	400mm
08	730mm	16	1530mm		
09	830mm	18	1730mm		
10	930mm	20	1930mm		
12	1130mm				



## FLEX FIFO SWIVEL SHELF



- Made of sheet steel, durable conductive powder coated in light grey.
- Front edge with 20mm stop edge.
- Lower side with support for stepless adjustable tilt and depth.


FLEX FIFO Swivel Shelf 140.2 <b>BB.5 T 0</b>					
<b>BB Width</b>				<b>T Depth</b>	
<b>05</b>	360mm	<b>13</b>	1155mm	<b>4</b>	400mm
<b>06</b>	460mm	<b>15</b>	1360mm	<b>5</b>	500mm
<b>08</b>	660mm	<b>16</b>	1460mm	<b>6</b>	600mm
<b>09</b>	760mm	<b>18</b>	1660mm		
<b>10</b>	860mm	<b>20</b>	1860mm		
<b>12</b>	1060mm				

FLEX FiFo Shelf Guide 140.460.0 <b>TT</b>					
<b>TT Depth</b>					
<b>04</b>	400mm	<b>05</b>	500mm	<b>06</b>	600mm



## FLEX FUNCTIONAL SHELF

- Light grey, 30mm thick, melamine resin covered chipboard, all sides with 3mm PP plastic edge.
- Front - and rear side with sheet steel stop edge, durable light grey powder coated. Optionally front edge with aluminium profile 30 x 30mm for the acceptance of shelf separators.
- Side parts made of 30 x 30mm aluminium profile with slots for sliding nuts.
- Sides with fixing brackets for the fixation to the FLEX upright sections, for a stepless tilt - and depth adjustment.

FLEX Functional Shelf 140.3 <b>BB. E T 0</b>					
<b>BB Width</b>				<b>E Version</b>	<b>T Depth</b>
<b>05</b>	360mm	<b>13</b>	1155mm	<b>4</b> Standard	<b>3</b> 300mm
<b>06</b>	460mm	<b>15</b>	1360mm	<b>5</b> ESD 	<b>4</b> 400mm
<b>08</b>	660mm	<b>16</b>	1460mm		<b>5</b> 500mm
<b>09</b>	760mm	<b>18</b>	1660mm		<b>6</b> 600mm
<b>10</b>	860mm	<b>20</b>	1860mm		
<b>12</b>	1060mm				

Accessory for FLEX Functional Shelf	
<b>140.3BB.900</b>	Option Front Edge Aluminium Profile
<b>140.301.0T0</b>	Separator for Aluminium Profile



# ONE AFTER ANOTHER

The „First in – First out“ solutions of the FLEX system ensures that first stored prematerials are used up before the later ones. This grants an optimized stock rotation and makes sure, that no material boxes will left behind.



## FLEX FIFO BIN FEEDING SYSTEM

The modular FLEX FiFo Bin Feeding System consists of following components:

- Pair of FLEX attachment braces with levelling feet and connecting elements to the upright sections.
- FLEX FiFo bracket for the connection between FLEX attachment braces and FLEX workshop bench.
- FLEX FiFo connecting brace to connect the two FLEX FiFo brackets.
- The storage bins are either positioned on the FLEX FiFo edge guide or the FLEX FiFo roller strip.
- FLEX FiFo stop edge holds the storage bins in place.
- Made of sheet steel, durable conductive powder coated in light grey.

### FLEX FiFo Attachment Brace 141.400.HH 0

#### HH Height above bench top

05	500mm	09	900mm	13	1300mm
06	600mm	10	1000mm	14	1400mm
07	700mm	11	1100mm	15	1500mm
08	800mm	12	1200mm		



## FLEX FIFO BRACKET

- Part of the modular bin feeding system.
- Pair of (left/ right) brackets for the attachment to the FLEX upright section and the FiFo attachment braces.
- Made of sheet steel, durable conductive powder coated in light grey.

### FLEX FiFo Brackets 140.400.0 TT

#### TT Depth

06	600mm	08	800mm	10	1000mm	12	1200mm
----	-------	----	-------	----	--------	----	--------



## FLEX FIFO CONNECTING BRACE

- Part of the modular bin feeding system.
- Connecting brace for the assembly to the FiFo brackets with raster holes for the flexible acceptance of FiFo roller strips and FiFo edge guides or FiFo stop edges.
- Made of sheet steel, durable conductive powder coated in light grey.

### FLEX FiFo Connecting Brace 140.4 BB,000

#### BB Width

09	760mm	12	1060mm	15	1360mm	18	1660mm
10	860mm	13	1155mm	16	1460mm	20	1860mm



FLEX FIFO STOP EDGE

- Part of the modular bin feeding system.
- For the assembly to the FiFo connecting braces, height: 20mm.
- Made of sheet steel, durable conductive powder coated in light grey.

FLEX FiFo Stop Edge		140.4		BB.200	
BB Width					
09	760mm	12	1060mm	15	1360mm
18	1660mm	10	860mm	13	1155mm
16	1460mm	20	1860mm		



FLEX FIFO EDGE GUIDE

- Part of the modular bin feeding system.
- Two edge guides (right/ left) for the assembly to the FiFo connecting braces.
- Made of sheet steel, durable conductive powder coated in light grey.

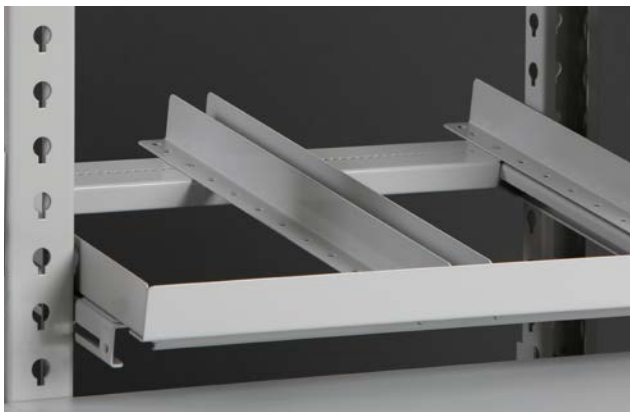
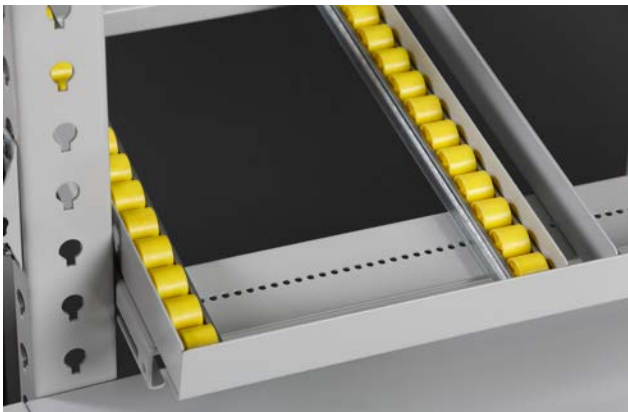
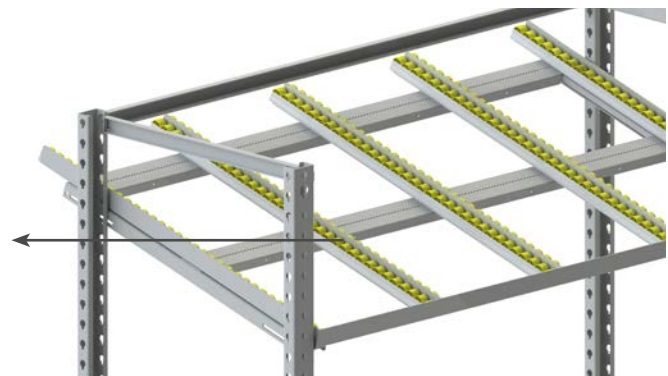
FLEX FiFo Edge Guide		140.460.0		TT	
TT Depth					
06	600mm	10	1000mm	12	1200mm



FLEX FIFO ROLLER STRIP

- Part of the modular bin feeding system.
- Two rails (right/ left) with reasy running plastic rollers (diameter: 25mm) and guiding sheets, for the flexible assembly to the FiFo connecting braces.
- Made of sheet steel, durable conductive powder coated in light grey.

FLEX FiFo Roller Strip		140.450.0		TT	
TT Depth					
10	1000mm	12	1200mm		

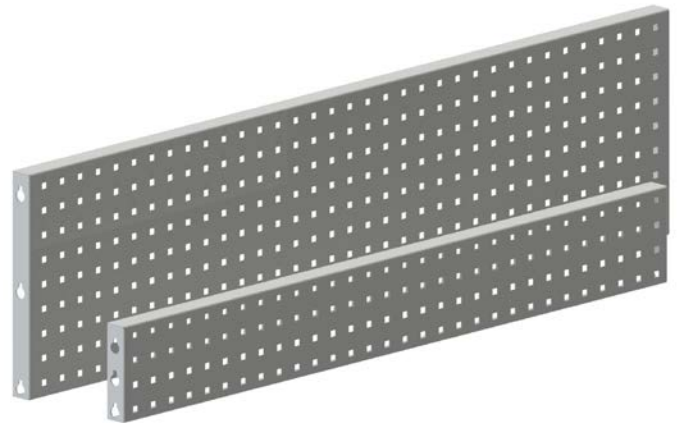


## FLEX PERFORATED BACKPLANE



- Perforated panel for the assembly to the FLEX upright sections, prepared for the attachment of tool - or bin holders.
- Squared perforation 10 x 10mm in 38mm raster.
- Made of 1,5mm thick sheet steel, durable conductive powder coated in light grey.

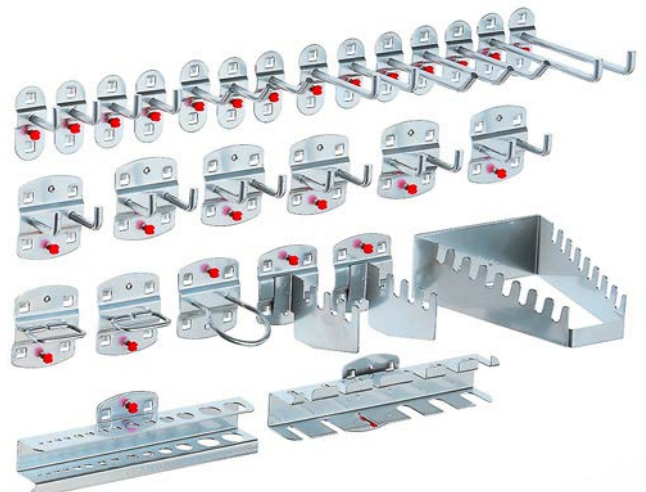
FLEX Perforated Backplane				140.5	BB	.0	T	0
BB Width				T Depth				
05	360mm	13	1155mm	1	150mm			
06	460mm	15	1360mm	3	350mm			
08	660mm	16	1460mm					
09	760mm	18	1660mm					
10	860mm	20	1860mm					
12	1060mm							



## TOOL HOLDERS FOR PERFORATED BACKPLANE

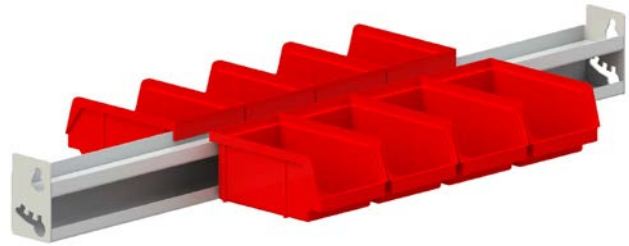
- The tool holders are prepared for hooking into the perforated backplane, arrestable by screw.
- Made of aluminium colored steel, durable plastic coating.

Tool Holders for Perforated Backplane	
469.900.010	12pcs.
469.900.020	18pcs.
469.900.030	28pcs.
469.900.040	40pcs.



## FLEX BIN BAR

- Bin bar made of double folded sheet steel, prepared for the assembly between two FLEX upright sections.
- Made of 2mm thick sheet steel, durable conductive powder coating in light grey.
- Dimensions: 30 x 60mm (DxH), tiltable (0° / 15° / 30°), both sides equipable.



FLEX Bin Bar		140.6 BB.000			
BB Width					
05	360mm	10	860mm	16	1460mm
06	460mm	12	1060mm	18	1660mm
08	660mm	13	1155mm	20	1860mm
09	760mm	15	1360mm		

## STORAGE BINS

- Storage bins made of polyethylene.
- Stackable with label holder.
- Available colors: grey (standard), green, blue, red and yellow.
- Storage bins up to 290mm length can be hooked into storage bins.
- Packing unit 10pcs.

### ESD Version:

- Made of special conductive plastics in black (with carbon fibres).
- GGG 010, 030, 050 not available in ESD.




Standard



ESD



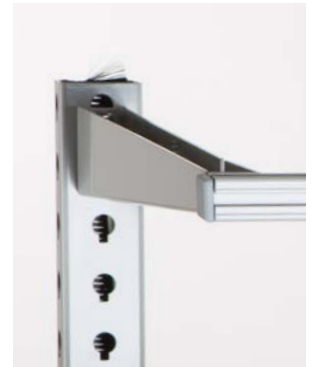
Bins		296. GGG . A 01		(PU = 10x)	
GGG Dimensions (WxDxH)				A Version	
010	500x300x250	050	290x140x130	1	Standard
020	500x300x200	075	230x140x130	2	ESD 
030	350x200x200	100	160x105x75		
040	350x200x150	125	85x105x45		

## FLEX OVERHEAD FRAME

- Consisting of two stable depth braces prepared for the acceptance of cables and hoses.
- Cross brace made of anodized aluminium profile 30 x 30mm for the acceptance of a tool slider.
- Made of sheet steel, durable conductive powder coated in light grey.
- Height: 75 / 30mm.



FLEX Overhead Frame 140.7 <b>BB.0</b> <b>T 0</b>				
<b>BB</b> Width			<b>T</b> Depth	
05	500mm	13	1295mm	5 500mm
06	600mm	15	1500mm	6 600mm
08	800mm	16	1600mm	7 700mm
09	900mm	18	1800mm	8 800mm
10	1000mm	20	2000mm	
12	1200mm			



## SLIDER WITH SNAP HOOK FOR FLEX OVERHEAD FRAME

- Tools can be hooked to the overhead frame and moved over the whole width of the bench.
- Color: black.
- Width: 60mm, hole diameter: 8mm.



Slider with Snap Hook	459.100.100
-----------------------	-------------

## SPRING BALANCER FOR FLEX OVERHEAD FRAME

- Balancers help to organize the workstation and make workings with electric or pneumatic tools more safe and comfortable.
- Adjustable pulling force.
- Pull-out wire rope (max. 1,6m) with snap hook.

Spring Balancer	
459.100.190	0,4 - 1,0kg
459.100.200	1,0 - 2,0kg
459.100.210	2,0 - 3,0kg



## FLEX OVERHEAD LAMP LED

- Glarefree overhead lamp with parabolic reflector, made of sheet steel.
- Lamp housing made of white sheet steel 207 x 56mm (DxH).
- Brightness adjustable in 3 steps in lamp housing.
- Color temperature: 4000K (Ra: >80).
- Hidden cable run in overhead frame.

Bench Width: ≤ 1600mm (lamp housing W: 1245mm):

- Power: 51W (adjustable to 35W or 24W).
- Brightness: 7600lm (5600 or 4000lm).

Bench Width: ≥ 1800mm (lamp housing: 1545mm):

- Power: 63W (adjustable 44W or 30W).
- Brightness: 9600lm (7100 or 5100lm).

FLEX Overhead Lamp 140.8 **BB.050**

### **BB** Bench Width

<b>13</b>	1295mm	<b>16</b>	1600mm	<b>20</b>	2000mm
<b>15</b>	1500mm	<b>18</b>	1800mm	<b>23</b>	2303mm



## MULTIFUNCTIONAL LAMP LED

- Ergonomic LED lamp made of anodized aluminium.
- Height: 65mm; depth: 45mm.
- Homogeneous and shade-free illumination of the work space due to micro-prism technology.
- Color reproduction: 5.500K (Ra: >85).
- Illumination angle: 100°.
- Optionally with flicker-free dimmer.
- Incl. switch and 3m power cable with PE plug.
- Sides with fixing brackets and tilting function.
- Pictures of the 120V version are differing.



Multifunctional Lamp LED

458.0 **BB . A 01**

### **BB** Lamp Housing

### **A** Type

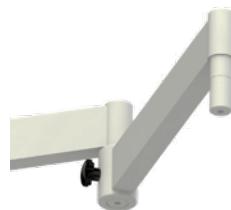
### 120V Types (5.000K)

<b>05</b>	500mm (13W / 1575lm)	<b>0</b>	Standard	458.100.090	899mm (35W / 974lx)
<b>09</b>	900mm (25W / 3150lm)	<b>1</b>	with Dimmer	458.100.120	1199mm (40W / 1100lx)
<b>12</b>	1200mm (34W / 4410lm)			458.100.150	1499mm (63W / 1422lx)
<b>15</b>	1500mm (39W / 5040lm)				

\* distance 100cm in measuring field 100x100cm

## PROFI SWIVEL ARM AND SLEEVE

- Hardwearing steel beam with solid sleeve / bolt combination.
- Load capacity: max. 50kg.
- Modular combination of:
  - Sleeve for fixation to extensions or upright sections.
  - Heavy duty swivel arm with bolt, sleeve and fixing screw. Available in different length, with cable holder.
  - Different end pieces with bolts.



PROFI Swivel Arm



PROFI Sleeve

### PROFI Swivel Arm and Sleeve

491.002.000	PROFI Sleeve Ø 25mm
491.003.000	PROFI Swivel Arm / reach: 250mm
491.004.000	PROFI Swivel Arm / reach: 300mm
491.005.001	PROFI Swivel Arm / reach: 500mm
491.002.100	Set 1: Sleeve + Swivel Arm / reach: 300mm
491.010.100	Set 2: Sleeve + Swivel Arm / reach: 300 + 250mm

## TRAY FOR SWIVEL ARM

- Tilttable tray made of sheet steel with surrounding stop edge.
- Durable conductive powder coating in light grey.
- Bolt (Ø 25mm).

### Tray for PROFI Swivel Arm

491.026.100	300 x 300 x 10mm (WxDxH)
491.026.110	400 x 400 x 10mm (WxDxH)
491.026.120	500 x 500 x 10mm (WxDxH)



## TILTABLE TRAY FOR SWIVEL ARM

- Sheet steel tray with bolt for swivel arm acceptance.
- Front and sides with 20mm stop edge. Tilttable in 4 steps (0° / 5° / 10° / 15°).
- Durable conductive powder coating in light grey.
- Bolt (Ø 25mm).

### Tilttable Tray for PROFI Swivel Arm

491.027.110	300 x 250mm (WxD)
491.027.130	450 x 350mm (WxD)
491.027.150	650 x 500mm (WxD)



## BIN SUPPORT FOR SWIVEL ARM

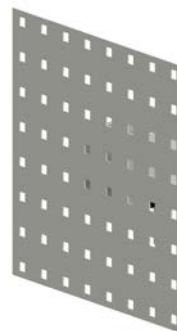
- Supporting rail made of steel for hanging up storage bins.
- Durable powder coating in light grey.
- Bolt (Ø 25mm).

Width	1 Level	3 Levels
300mm	491.022.101	491.022.300
400mm	491.022.111	491.022.310
500mm	491.022.121	491.022.320



## BACKPLANE FOR PROFI SWIVEL ARM

- For the acceptance of tool holders, bin bars or shelves.
- Swivelling perforated backplane, made of sheet steel (1,5mm thick) with surrounding reinforcement.
- Durable light grey powder coated.
- Bolt (Ø 25mm).



Backplane for PROFI Swivel Arm

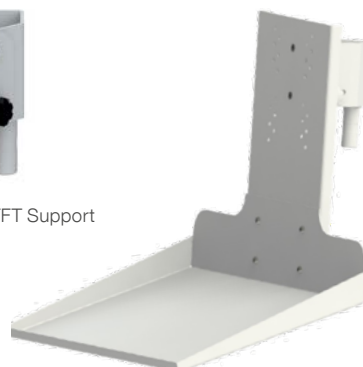
491.024.101	300 x 290mm (WxD)
491.024.111	300 x 130mm (WxD)
491.024.121	550 x 290mm (WxD)
491.024.131	550 x 130mm (WxD)

## TFT SUPPORT FOR PROFI SWIVEL ARM

- Very sturdy swivel head (+/- 20°) with 2 fixing screws and bolt (Ø 25mm).
- Adapter plate in VESA standard (100x100mm and 75x75mm).
- Keyboard tray 470 x 220 x 320mm (WxDxH).
- Swivelling mouse pad 200x200mm.
- Durable light grey powder coated.



491.028.101 TFT Support



491.028.111 TFT Support with Keyboard Tray

TFT Support for PROFI Swivel Arm

491.028.101	TFT Support
491.028.111	TFT Support with Keyboard Tray
491.028.121	TFT Support with Keyboard Tray and Mouse Pad



491.028.121 TFT Support with Keyboard Tray and Mouse Pad

## NOTEBOOK - AND KEYBOARD TRAY FOR PROFI SWIVEL ARM

- Very sturdy swivel head (+/- 20°) with two fixing screw and bolt (Ø 25mm).
- Tilttable shelf made of sheet steel. Front with bent stop edge.
- Notebook support 400 x 300mm (WxD).
- Keyboard support 470 x 200mm (WxD).
- Durable light grey powder coated.



491.028.320 Notebook Support

491.028.330 Keyboard Support

Notebook - and Keyboard Support for PROFI Swivel Arm

491.028.320	Notebook Support
491.028.330	Keyboard Support

## BOTTLE HOLDER

- Two-part holder made of aluminium for bottles with max. 94mm diameter.
- Incl. assembly set for the flexible fixation to the PROFI extensions or FLEX upright section.
- Durable light grey powder coated.
- Dimensions: 117 x 120mm (DxH).

Bottle Holder	
468.200.102	Bottle Holder for 1x Bottle, W: 114mm
468.200.202	Bottle Holder for 2x Bottles, W: 210mm



## TOOL HOLDER


- All tools always close at hand.
- The tools are easy to push in or pull out due to flexible plastic lugs.
- Color: black.
- Dimensions: 44 x 35 x 30mm (LxHxD).

Tool Holder	461.912.000
-------------	-------------



## TURNTABLE FOR HEAVY PARTS

- Stainless steel disk with ripped rubber surface.
- Load capacity: 180kg.
- Height: 20mm.
- Position lock with pin in 45° raster, free-wheeling mechanism.

Turntable		299.62	A	D	T
A Version	D Diameter	T Type			
0 Standard	3 380mm	0 no Position Lock			
5 ESD 	5 500mm	5 with Position Lock			

### ESD Version:

- Conductive rubber surface and earthing cable.



## ESD DOCUMENT PROTECTOR DIN A4

- 10x DIN A4 document bags consisting of a black supporting frame with transparent dissipative polyethylene bags.
- Supporting frame made of stainless steel with assembly set for the fixation to the PROFI extensions or FLEX upright sections.

ESD Document Protector DIN A4	468.100.100
-------------------------------	-------------



# KEEP THINGS MOVING!

You wish to establish a highly efficient and ergonomically designed production line? - The FLEX transfer systems offer lots of accessory to set-up an individual solution for various applications. The configuration can be adapted later-on with changing demands.



## FLEX TRANSFER BASE

- Height: 750mm.
- Closed frame made of 40 x 40mm tubular steel.
- Four legs made of 40 x 40mm tubular steel with leveling feet. The legs are assembled to the frame with easy to install corner joints.
- Durable conductive powder coating in light grey.

FLEX Transfer Base 116. <b>LL</b> <b>B</b> .500					
<b>LL</b> Length			<b>B</b> Width		
06	600mm	16	1600mm	4	400mm
08	800mm	18	1800mm	5	500mm
10	1000mm	20	2000mm	6	600mm
12	1200mm	25	2500mm	7	700mm
14	1400mm	30	3000mm	8	800mm



## OPTION HEIGHT ADJUSTMENT

- The legs are made as tube-in-tube system with fixing bolts and leveling feet.
- Height adjustable in the range of 740 - 960mm, in 20mm raster.
- Durable conductive powder coating in light grey.

Option Height Adjustment	191.092.500
--------------------------	-------------



## TRANSFER LINE SIDE PARTS

- Prepared for the assembly to the transfer base. für die
- Anodized aluminium profile 30 x 30mm, all sides with profile slots.
- Durable light grey powder coated sheet steel parts with raster holes for heavy duty rollers.
- Height: 100mm.

Transfer Line Side Parts 116. <b>LL</b> 1.000					
<b>LL</b> Length					
06	600mm	14	1400mm	20	2000mm
08	800mm	16	1600mm	25	2500mm
10	1000mm	18	1800mm	30	3000mm
12	1200mm				



## TRANSFER LINE STOP-END

- Stop-end for the assembly to the side parts.
- Sheet steel, durable light grey powder coated.
- Height: 100mm.

Transfer Line Stop-End		116.00 <b>B</b> .500	
<b>B</b> Width			
4	400mm	6	600mm
5	500mm	7	700mm
8	800mm		



## CYLINDRIC HEAVY DUTY ROLLER

- Roller diameter: 30mm.
- Spring axle with 6mm diameter.

Cylindric Heavy Duty Roller		102.00 <b>B</b> . <b>M</b> 00	
<b>B</b> Width		<b>M</b> Material	
4	400mm	2	anodized steel
5	500mm	3	stainless steel
6	600mm	4	aluminium
7	700mm	5	plastics
8	800mm		



## ROLLER STRIP

- Rollers made of high quality thermoplastic polyurethane.
- Optional with wheel flange.
- Easy roller replacement.
- U-guidance made of anodized sheet steel.
- Roller diameter: 30mm.
- Wheel flange diameter: 44mm.
- Roller width: 25mm.
- Total height: 40mm.
- Load capacity: 12kg.



Roller Strip		102. <b>LL</b> 0. <b>S</b> <b>RR</b>	
<b>LL</b> Length		<b>S</b> Wheel Flange	<b>RR</b> Roller Distance
06	600mm	0	no wheel flange
08	800mm	5	with wheel flange
10	1000mm		
12	1200mm		
14	1400mm		
		03	33mm (only without wheel flange)
		05	50mm
		10	100mm

## STOPPER

- Support for the assembly to the side parts with gravity stopping mechanism.
- Sheet steel with durable light grey powder coating.

Stopper 116.00 **B** .700

### **B** Width

<b>4</b>	400mm	<b>6</b>	600mm	<b>8</b>	800mm
<b>5</b>	500mm	<b>7</b>	700mm		



## SHEET STEEL BED FOR ROLLER BALLS

- Sheet steel with folded edges and customer specific perforation for roller balls.
- Incl. assembly set for the fixation to the side parts.
- Durable, conductive powder coating in light grey.

Sheet Steel Bed for Roller Balls 116.0 **L** **B** .000

### **L** Length

### **B** Width

<b>4</b>	400mm	<b>7</b>	700mm	<b>4</b>	400mm	<b>7</b>	700mm
<b>5</b>	500mm	<b>8</b>	800mm	<b>5</b>	500mm	<b>8</b>	800mm
<b>6</b>	600mm			<b>6</b>	600mm		



## ROLLER BALL

- Large stainless steel ball, easily wheeling on load-bearing balls in sheet steel shell.
- Outer diameter 31mm.
- Ball diameter 15,8mm.
- Dirtprotected due to surrounding sealing.

Roller Ball (pcs.)

102.100.000

