



CHAPTER 4: EASY WORKSTATION SYSTEM

- | | | | |
|------------|---|------------|---|
| 110 | Workbench in Standard and ESD | 123 | Height Adjustable Bench |
| 112 | Trapezium Bench and EMV Bench | 124 | Option Lifting Casters |
| 113 | Bench with Casters and PC Support | 126 | Bench Top Frame |
| 114 | Cable Tray and Cable Insert | 127 | Shelving Rack |
| 116 | Corner Solution for EASY Benches | 128 | Shelf Rack |
| 117 | Bench Connector | 130 | Training System Support |
| 118 | Floor Fixation, H-Leg for Mechanical Workshop | 131 | Training System Frame and Installation Wall |
| 119 | Bench Top for Laboratory and Workshops | 132 | Installation Wall, metal and wood |
| 122 | Mechanical Workshop Bench | 133 | Installation Cabin |
| | | 134 | TFT Chest |

EASY WORKBENCH STANDARD AND ESD



- Total height: 780mm.
- Highly stable bench frame made of durable powder coated tubular steel 40 x 40mm.
- Durable, 30mm thick bench top (multilayer chipboard according to DIN EN ISO 13894-1). Upper side with 0,8mm thick hardlamine according to DIN EN 438-2).
- All sides with 3mm PP plastic edge.
- Four bench legs made of tubular steel 40 x 40mm with leveling screws, connected to the bench frame with torsion resistant corner joints.

EASY Workbench

- highly stable bench frame
- surrounding frame made of 40 x 40mm tubular steel
- flexible and vibration-free bench legs with aluminium corner joints

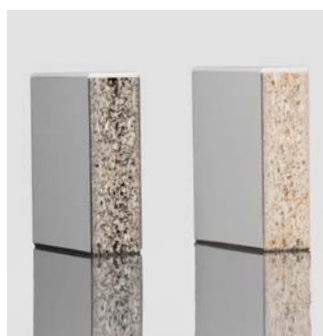
ESD Version:



- Right and left front with press stud for the connection of ESD wrist bands.
- Rear side with defined earth bonding point EBP.
- Surface- and volume conductive bench top (according to DIN EN 61340), all sides with antistatic 3mm PP plastic edge. Conductively connected to the bench frame.
- Bench legs with conductive leveling screws.



Front with 50mm overhang



ESD - and standard bench top



Standard height adjuster

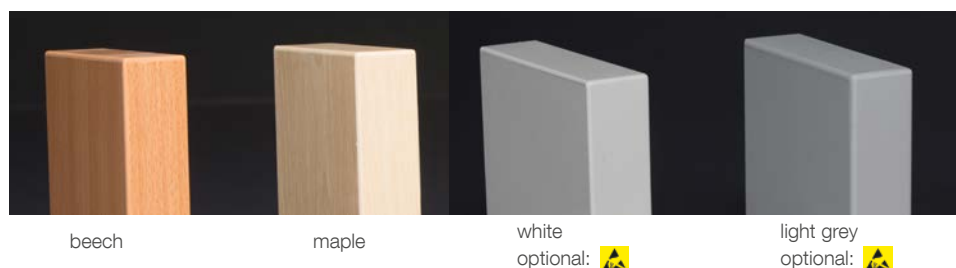
EASY WORKBENCH STANDARD AND ESD

A Type with Middle Brace



- with extra middle brace for even higher load capacity
- with thread inserts for the fixation of a PROFI suspended container in front and middle brace



F Color



EASY Workbench 1 TT BBB F 0 A

TT	Depth	BBB	Width	F	Color (Bench Top / Base)	A	Type
06	600mm	060	600mm	5	light grey / light grey	0	Standard
10	800mm	080	800mm	7	light grey / anthracite	5	with Middle Brace
11	900mm	090	900mm	8	Wood decor (beech/maple) / Base according to RAL Code		
12	1000mm	100	1000mm	9	Bench Top white or light grey / Base according to RAL Code		
ESD		120	1200mm				
37	600mm	126	1260mm				
07	800mm	129	1295mm	Accessory ESD			
27	900mm	148	1485mm				
17	1000mm	150	1500mm				
		160	1600mm				
		180	1800mm				
		200	2000mm	299.890.110	Wrist Band with Spiral Cord		
		230	2303mm	299.890.120	Wrist Band		
				299.890.130	Spiral Cord		
				299.890.520	Connection Box with 2x Press Studs 10,3		



OPTION THREAD INSERTS FOR SUSPENDED CONTAINER

- Right and left side of the lower bench top with thread inserts for the fixation of hanging containers.
- Metallic thread inserts M6, pullout-save for heavily loaded containers.

Option Thread Inserts for Suspended Containers

100.110.570	for PROFI Containers, Depth: 580
100.110.670	for PROFI Containers, Depth: 680
100.110.770	for PROFI Containers, Depth: 780
100.120.500	for EASY Containers
100.130.400	for Sheet Steel Containers



EASY TRAPEZIUM BENCH 60°

The trapezium benches are ideal for the realization of hexagonal team workstations. Especially in training rooms the benches can either be placed separately or as team workstation. Also ideal is to have a double sided instrument rack in the middle and place a trapezium bench on both sides.

- Total height: 780mm.
- Surrounding bench frame with bench legs, made of tubular steel 40x40mm.
- Steel parts with durable powder coating.



EASY Trapezium Bench 1 **TT** **BBB** **F** 50

TT Width		BBB Depth		F Color (Bench Top / Base)	
06	600mm	126	1260mm	160	1600mm
10	800mm	130	1295mm	180	1800mm
11	900mm	148	1485mm	200	2000mm
12	1000mm	150	1500mm		
				5	light grey / light grey
				7	light grey / anthracite
				9	light grey or white /
					in RAL Code

EASY EMC BENCH

- Benches for electromagnetic compatibility.
- Bench top made of beech multiplex, oiled, 40mm thick with camfered edges.
- Bench frame made of solid oiled and sanded beech wood.
- Optional with bench top cover:
 - galvanized steel sheet 1,5mm
 - copper sheet 1mm
 - aluminium sheet 2mm
 The covers are screw-fixed or glued and with earth bonding point.
- Load capacity 100kg.
- Bench height: 780mm.
- Optionally with four steering casters, two with brakes.
- Optionally 3-sided with stiffeners (recommended for bench with casters).



EASY EMC Bench 1 **TT** **BB1** **A** **V** **F**

TT Depth		BB Width		A Surface		V Stiffener		F Casters	
10	800mm	12	1200mm	18	1800mm	0	Wood	3	Aluminium
11	900mm	16	1600mm	20	2000mm	0	no Stiffener	0	none
12	1000mm					1	galvan. Steel	4	Stainless Steel
				2	Copper	5	with Stiffener	5	with

EASY H-STIFFENER

- Recommended for mobile benches and benches for mechanically very rough use.
- Consisting of two side braces and one cross brace, made of tubular steel 40 x 40mm.
- Steel parts durable powder coated.
- Installation height: 100mm.



EASY H-Stiffener 191 . **BB** **T** . **F** 50

BB Width

06	600mm	12	1200mm	16	1600mm
08	800mm	13	1260mm	18	1800mm
09	900mm	14	1485mm	20	2000mm
10	1000mm	15	1500mm	23	2303mm

T Depth

6	600mm
8	800mm
9	900mm
1	1000mm

F Color

1	anthracite
5	light grey
9	RAL Code

EASY BENCH, MOBILE

- Shortened bench legs with integrated threaded plate for the solid fixation of the casters.
- Four steering casters, two with brakes.
- For a total bench height of 780mm.



75mm Standard



with Brake

EASY Bench, Mobil 191 . 07 **A** . **F** **R** 0

A Version

1	Standard
2	ESD 

F Color

1	anthracite
5	light grey
9	RAL Code

R Caster Diameter

0	100mm
1	75mm
2	125mm

EASY PC SUPPORT

- Suspended PC support made of tubular steel supported sheet steel construction for width adjustment between 160 - 210mm.
- The PC support can be mounted at the left or right EASY bench leg.
- Steel parts with durable powder coating.
- Dimensions: 160-210 x 400 x 160mm (WxDxH).

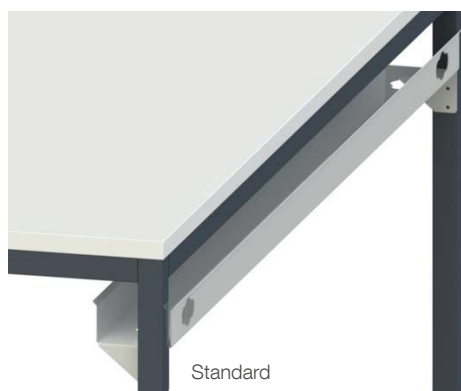
EASY PC Support

191.080.101	anthracite
191.080.501	light grey
191.080.901	RAL Code



CABLE TRAY FOR EASY BENCH

- Made of sheet steel, for the fixation between the rear bench legs in variable height.
- Steel parts with durable powder coating.

EASY Cable Tray 113 . **BBB** . **F** 0 **A**

BBB Width

080	800mm	126	1260mm	160	1600mm
090	900mm	129	1295mm	180	1800mm
100	1000mm	148	1485mm	200	2000mm
120	1200mm	150	1500mm	230	2303mm

F Color

1	anthracite
5	light grey
9	RAL Code

A Type

1	Suspended Cable Tray
5	Cable Tray with Brush Strip (60mm rear overhang)

CABLE INSERT, ROUND

- Plastic outer ring with rotatable spring flap.
- Incl. cutout in bench top.
- The spring flap can be removed for leading through the plugs.

Cable Insert, round (inner - / outer diameter)

419.061.000	Ø 80/92mm, light grey
419.061.100	Ø 80/92mm, stainless steel color
419.061.200	Ø 80/92mm, black
419.061.300	Ø 80/92mm, beige
419.062.000	Ø 60/72mm, light grey
419.062.100	Ø 60/72mm, stainless steel color
419.062.200	Ø 60/72mm, black
419.062.300	Ø 60/72mm, beige
419.062.900	Ø 60/72mm, with 3x USB Port and 2x Audio Jacks, black



Please state the position!

CABLE ACCESS ELEMENT, RECTANGULAR

- Practical bench top element with foldable flap in anodized silver color.
- Black brush strip for cable outlet even if closed.
- Incl. cutout in bench top.

Cable Access Element, rectangular

293.930.310	120 x 120mm
293.930.320	240 x 120mm
419.063.100	276 x 80mm



FLEX SOCKET STRIP

- The socket strip can be placed or fixed into the cable tray of the EASY bench.



FLEX Socket Strip 293 . 6 A S . Z 0 F

A Sockets	S Switch	Z Cable	F Color
3 3 Sockets Type F	0 with Switch	0 no Cable	0 white
4 4 Sockets Type F	1 no Switch	1 1,5m Cable	1 black
6 6 Sockets Type F		3 3m Cable	2 red
293.600.000 Fixing Set for PROFI Profile für FLEX Socket Strip		5 5m Cable	
293.600.010 Connected to the Mains Panel			
293.600.030 Option Socket Strip fixed in Cable Tray			
293.642.100 4x Sockets Type G (British Standard)		293.660.980 6x Sockets Type B (NEMA)	

SOCKET STRIP INDUSTRY, TYPE F

- High quality socket strip in silver colored plastic housing and black outlets with child protection (45° turned), black end caps and fixing tongues.
- Black power cord H05VV-F 3G1,50mm², 2m with angled plug Type F.
- Dimensions: 70 x 45mm (WxH).



Socket Strip Industry

293.204.100 4fold with Switch (L: 355mm)	293.209.100 9fold with Switch (L: 570mm)
293.206.100 6fold with Switch (L: 440mm)	293.212.100 12fold with Switch (L: 700mm)

SOCKET UNIT FOR FURNITURE INTEGRATION

- Silver colored steel sheet frame (248 x 151mm).
- Solid flap-mechanism, snapping into end position (integration depth: 56mm).
- Cable outlet even in closed condition due to brush strip.
- Stable clamp connection for 18 - 30mm thick bench tops.
- The socket unit can be inserted after the flap mechanism is integrated.
- Sockets Type F (others on demand).



Socket Unit for Furniture Integration

293.338.025	Metallic Integration Frame (sim. RAL9006)
293.338.026	Anthracite Integration Frame (sim. RAL7016)
293.911.001	White Integration Frame (sim. RAL9010)
293.333.107	Socket Unit 3fold
293.912.003	Socket Unit 2fold and 1x Keystone Adapter
293.912.002	Socket Unit 1fold and 2x Keystone Adapter



MOUNTING KIT L-COMBINATION FOR EASY BENCHES

- This leg-reduced corner combination is for an ergonomic use of the corner element, it requires two EASY benches and the mounting kit.
- Steel parts are durable powder coated.

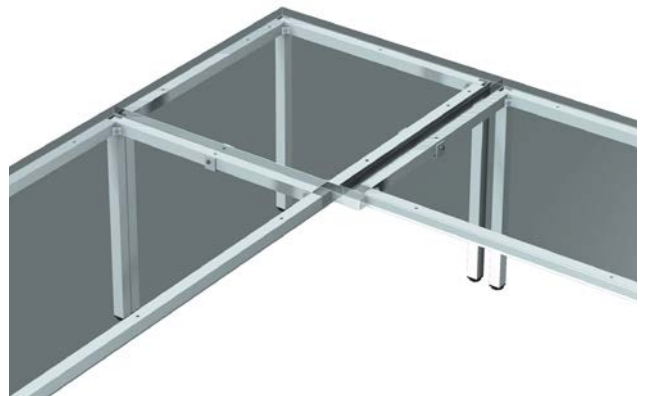
Mounting Kit L-Combination	
191.027.100	anthracite
191.027.500	light grey
191.027.900	RAL Code



MOUNTING KIT CORNER BENCH FOR EASY BENCHES


- This leg-reduced corner combination is for an ergonomic use of the corner, it requires two EASY benches, one squared workbench and the mounting kit.
- Steel parts are with durable powder coating.

Mounting Kit for Combinations with Corner Bench	
191.028.100	anthracite
191.028.500	light grey
191.028.900	RAL Code



EASY PC CORNER BENCH

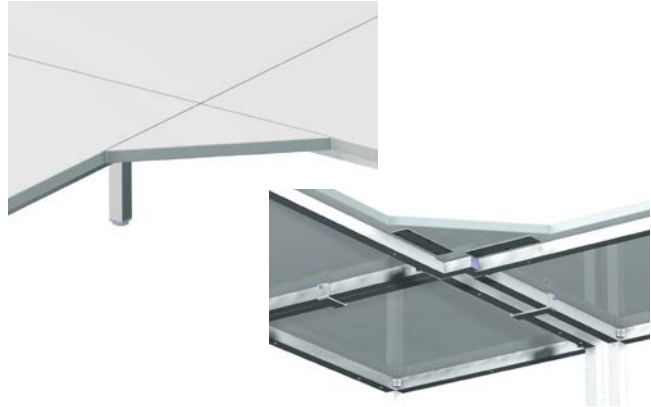
- Special bench frame for a stable corner combination.
- Incl. corner leg and two recessed bench legs with height adjusters.
- Durable 30mm thick bench top with 3mm PP plastic edge, tailored front edge to enable ergonomic use of the corner.
- Steel parts with durable powder coating.
- Front edge: 580mm (bench depth: 800), 440mm (bench depth: 900), 300mm (bench depth: 1000).
- Rear edges: 1213 x 1213mm.

EASY PC Corner Bench 1 BB . 500. F 00	
BB Width	F Color (Bench Top / Base)
10 800mm	5 light grey / light grey
11 900mm	7 light grey / anthracite
12 1000mm	8 Wood Decor (beech / maple) / Base in RAL Code
ESD 	9 light grey or white / Base in RAL Code
07 800mm	
27 900mm	
17 1000mm	




TRIANGLE ELEMENT FOR EASY CORNER COMBINATION

- The triangle element is an option for corner benches or L-combinations, so the corner can be ergonomically used as workspace.
- Made of 30mm thick bench top with PP plastic edge and connecting plates to the adjoining benches.
- Front edge: 500mm, side length: 350mm.



Triangle Element for EASY Corner Combinations

		ESD	
light grey	191.029.500	191.030.500	
white	191.029.800	191.030.800	

EASY BENCH LEG FOR LEG-FREE BENCH ROWS

- For more ergonomic bench rows the middle bench optionally can be a leg-free variant supported by an extra EASY leg in recessed position.
- For the connection of two bench frames, span with: 85mm, steel parts durable powder coated.
- Height: 710mm for a total bench height of 780mm.

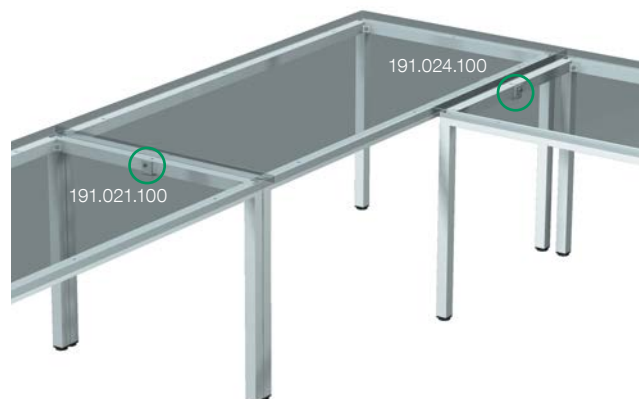
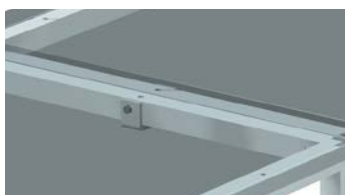


EASY Bench Leg for Leg-Free Bench Rows

		ESD	
anthracite	191.022.100	191.023.100	
light grey	191.022.500	191.023.500	
RAL Code	191.022.900	191.023.900	

EASY BENCH CONNECTOR

- Nickel-plated clamp with fixing screw.
- For the connection of two EASY bench frames.

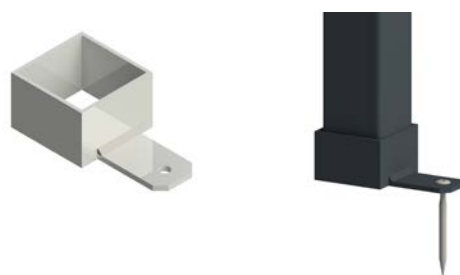


EASY Bench Connector

191.021.100	Span Width: 85mm
191.024.100	Span Width: 130mm

FLOOR FIXATION FOR EASY BENCH

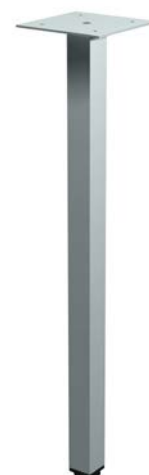
- The EASY benches can be anchored to the floor.
- Durable powder coated tubular steel with lug and floor dowel.



EASY Floor Fixation	
191.011.100	anthracite
191.011.500	light grey
191.011.900	RAL Code

EASY BENCH LEG WITH MOUNTING PLATE

- Tubular steel 40 x 40mm with height adjuster and mounting plate.
- The bench leg is for the variable positioning under different types of bench top elements.
- Height: 750mm (for standard bench height: 790mm).



EASY Bench Leg with Mounting Plate	
123.000.100	anthracite
123.000.500	light grey
123.000.900	RAL Code

EASY H-LEG FOR MECHANICAL WORKBENCH

- Welded H-shaped double bench leg, made of 40 x 40 x 2mm tubular steel with massive fixing plate.
- Incl. assembly set and height adjusters.
- Sheet steel parts durable powder coated.
- Height: 750mm (for a total height of 780mm).



EASY H-Leg for Mechanical Workbench		123.0	TT	F	00
TT	Depth	F	Color		
20	620mm	1	anthracite		
10	750mm	5	light grey		
		7	RAL Code		

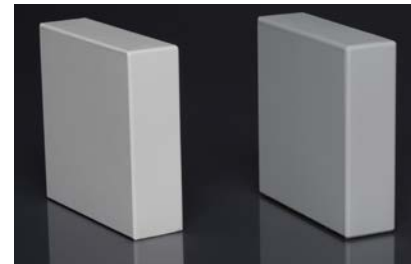
DIRECTLY COVERED BENCH TOPS


- Melamine resin covered 3-layer chipboard.
- All sides with durable PP plastic edge.
- Customized dimensions.

ESD Version:



- Surface- and volume conductive 3-layer chipboard according to DIN-EN 61340-5-1.



Directly Covered Bench Tops 10 A .0 ST . F 00				
A	Version	ST	Thickness	F Color
1	Standard	08	8mm	5 light grey
8	ESD 	19	19mm	8 white
		25	25mm	9 beech / maple (not in ESD)
		00	28mm	

HARDLAMINATED BENCH TOPS


- 3-layer chipboard with hardwearing HPL surface (multilayer chipboard according to DIN EN ISO 13894-1. Upper side with 0,8mm HPL layer according to DIN EN 438-2).
- All sides with 3mm PP plastic edge.
- Thickness: 30mm.

ESD Version:



- Surface- and volume conductive 3-layer chipboard according to DIN-EN 61340-5-1.



Hardlaminated Bench Tops 10 A .000. F 00				
A	Version	F	Color	
0	Standard	5	light grey	
7	ESD 	8	white	
		9	beech / maple (not in ESD)	

MECHANICAL WORKTOPS

- Massive beech tops, either multiplex or solid timber.
- Multiple sanded and laquered or oiled.
- Camfered edges.



Mechanical Worktops 10 A .0 ST .000				
A	Type	ST	Thickness	
4	Multiplex	20	20mm (only multiplex)	
5	Solid Timber	30	30mm	
		40	40mm	
		50	50mm (only solid timber)	


BENCH TOPS WITH BEVELLED FRONT EDGES

- Hardlaminated light grey bench tops with bevelled front edge (70mm drop edge covering the frame) or PROFIttec edge (impact proofed detachable edge made of solid black plastics with 10mm radius).
- Other sides with 3mm PP plastic edge.
- Customized dimensions (max. 3600 x 1100mm).
- Thickness: 30mm.

ESD Version:

- Light grey 30mm thick melamine resin covered chip-board, sides with 3mm PP plastic edge.
- ESD version volume and surface conductive according to DIN EN61340.



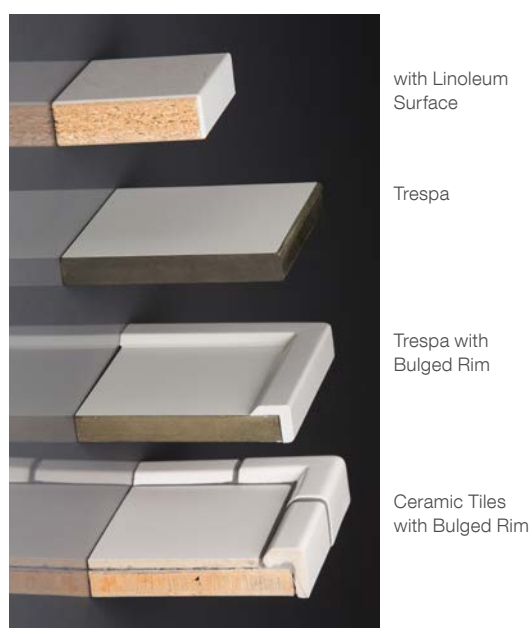
Bench Tops with Bevelled Front Edges 10 A 0 V 0.500	
A Type	V Version
0 Standard	1 PROFIttec
7 ESD 	2 P26 Edge
	4 70mm drop edge



SPECIAL TOPS

- Bench top with affixed covering and 3mm PP plastic edge.
- Tiled worktop, support plate with white ceramic tiles or red-brown fine stoneware tiles, optionally with bulged rim.
- Trespa bench top (extremely hardwearing plate with solid hard core in black and light grey surface. Optional with epoxy bulged rim 20/27mm).
- Stainless steel top with V100 chipboard and optional with bulged rim.

Special Tops	
103.000.000	Bench Top with Linoleum Surface
103.100.000	Bench Top with surfaced with 2mm ESD Mat
109.000.000	Worktop with white Ceramic Tiles
109.100.000	Worktop with red-brown Stoneware Tiles
106.000.000	Trespa Bench Top, no Bulged Rim
106.100.000	Trespa Bench Top, with Bulged Rim
108.000.000	Stainless Steel Top, no Sink
108.100.000	Stainless Steel Top, with Sink



THE MECHANICAL WORKBENCH DEFYS ANY IMPACT

The surrounding tubular steel frame with extra H-stiffener offers extraordinary stability even for rough mechanical works. The workbench can be equipped with vise, sheet steel container and many accessory to make sure you have everything in perfect reach.



EASY MECHANICAL WORKBENCH

- Highly stable and durable powder coated bench frame with extra H-stiffener made of 40 x 40mm tubular steel.
- 40mm thick solid wooden bench top. Multiple oiled or laquered.
- Height: 790mm, depth: 700mm.

Beech
MultiplexSolid Timber
Beech

Mechanical Workbench with Beech Top			11	A	1	B	0	F	00
A Type		B Width		F Color					
4	Multiplex	2	1200mm	1	anthracite				
5	Solid Timber	5	1500mm	5	light grey				
		8	1800mm	9	RAL Code				

SHELF BOARD FOR MECHANICAL WORKBENCH

- Prepared for the assembly on the H-stiffener of the mechanical workbench.
- 20mm thick beech multiplex shelf, oiled.
- Depth: 400mm.

Shelf Board for Mechanical Workbench	
190.051.000	Width: 1200mm
190.052.000	Width: 1500mm
190.053.000	Width: 1800mm



RAISED EDGE FOR MECHANICAL WORKBENCH

- Mounted at the rear and / or side of the mechanical worktop.
- 19mm thick beech multiplex, oiled.
- Height: 70mm.

Raised Edge per Meter	190.050.000
-----------------------	-------------



OPTION **MECHANICAL HEIGHT ADJUSTMENT** FOR EASY BENCH

- Adjustable bench height 740 - 960mm.
- Bench legs, made of stable tube-in-tube solution with bolt fixation.
- Outer tube diameter 40 x 40mm with 20mm hole raster.
- With metallic leveling screws.
- Steel parts with durable powder coating.

Mechanical Height Adjustment	
191.092.100	anthracite
191.092.500	light grey
191.092.900	RAL Code



OPTION **HYDRAULIC HEIGHT ADJUSTMENT** FOR EASY BENCH

- Bench legs with four hydraulic cylinders and under the bench top installed hydraulic pump.
- Operated by hand crank or electrically.
- Height adjustable between 750 - 1150mm (hand crank: 400mm / electric lift: 380mm).
- Total load capacity: 3500N.
- Synchronized with 4-chamber hydraulic pump.
- The up / down button of the electric drive is ergonomically positioned at the front edge of the bench.
- The hand crank version is with ergonomically down-foldable crank.



Option Hydraulic Height Adjustment		
191.061.500	Hand Crank	5mm/U
191.062.500	Electric Lift	15mm/s

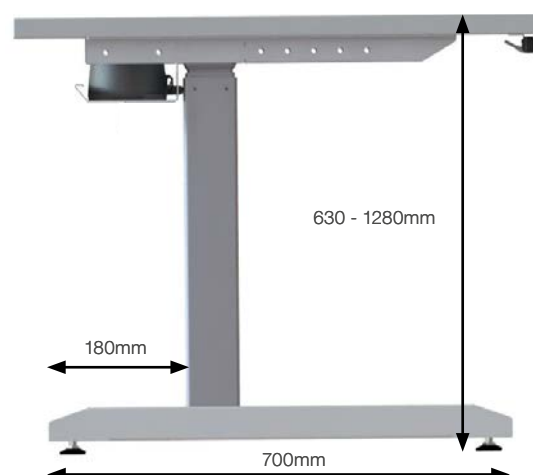
EASY C-LIFT BASE, NO BENCH TOP

Height adjustable bench base (630mm - 1280mm) consisting of:

- Two telescopic lifts with silent running spindle drive, durable white aluminium powder coated. Leg diameter: 50 x 80mm. Lifting height 650mm; max. lifting force: 2 x 800N, max. lifting speed: 38mm/s.
- Fully synchronized control unit installed under the bench top with hidden cable run between operating unit and lifts. Anticollision function (programmed switch-off force in case of collision, with stop and reverse function).
- Operating unit with memory function (3 programmable heights) with digital height indication is mounted at the right front edge of the bench.
- Nicely shaped sheet steel base with leveling screws, durable powder coated according to RAL Code. Depth: 700mm.
- Middle section made of sheet steel, mounted as stiffener between the lifts. Durable powder coated according to RAL Code.
- Stabil H-frame made of sheet steel with integrated rear sided cable tray (D: 160mm; H: 95mm). Durable dissipative powder coated in light grey.
- Completely installed.

Note: Please choose bench top on page 119 / 120

max. recommended bench depth: 900mm



EASY C-Lift Base		193. BB 0.000	
BB Width			
05	500mm	10	1000mm
08	800mm	12	1200mm
		16	1600mm
		18	1800mm

OPTION LIFTING CASTERS FOR EASY BENCH

- Mechanic lifting mechanism for EASY bench.
- Two height adaptable tubular steel frames with synchron shaft and eccentric lever.
- 75mm steering casters with brakes.

Option Lifting Casters		193. BB T .900	
BB Width		T Depth	
06	600mm	13	1260mm
08	800mm	14	1485mm
09	900mm	15	1500mm
10	1000mm	16	1600mm
12	1200mm	18	1800mm
		6	600mm
		8	800mm
		9	900mm
		1	1000mm



RELIABLE STABILITY WITH EASY BENCH TOP MOUNTINGS

The EASY bench top frame and all EASY shelf racks fit ideally to each EASY bench and mechanical workbench, the connection is solid screw fixing. You would like to combine those elements to an existing bench? Not a hera product? - No problem!



EASY BENCH TOP FRAME

- Two side parts with two cross braces made of 30 x 30mm tubular steel, prepared for the acceptance of a shelf and panelling.
- Durable powder coated steel parts.
- Dimensions 295 x 355mm (DxH).

EASY Bench Top Frame 198.BBB.F 00

BBB	Width		F	Color
080	800mm	148	1485mm	1 anthracite
090	900mm	153	1500mm	5 light grey
100	1000mm	160	1600mm	9 RAL Code
120	1200mm	180	1800mm	
126	1260mm	200	2000mm	



EASY BENCH TOP FRAME, HEIGHT ADJUSTABLE

- Two side parts, height adjustable due to tube-in-tube system with 20mm raster for locking bolts.
- Two cross braces made of 30 x 30mm tubular steel.
- Durable powder coated steel parts.
- Dimensions 295 x 355-605mm (DxH).

EASY Bench Top Frame, height adjustable 198.BBB.F 00

BBB	Width		F	Color
082	800mm	150	1485mm	1 anthracite
092	900mm	152	1500mm	5 light grey
102	1000mm	162	1600mm	9 RAL Code
122	1200mm	182	1800mm	
128	1260mm	202	2000mm	



EASY BENCH TOP FRAME, PANELED

- Two side parts with two cross braces made of 30 x 30mm tubular steel, prepared for the acceptance of a shelf and panelling.
- Incorporated rear - and side panels made of 19mm melamine resin covered chipboard.
- Durable powder coated steel parts.
- Dimensions 295 x 355mm (DxH).

EASY Bench Top Frame, Paneled 198.BBB.F 00

BBB	Width		F	Color
081	800mm	149	1485mm	5 light grey / light grey
091	900mm	151	1500mm	7 light grey / anthracite
101	1000mm	161	1600mm	9 white / RAL Code
121	1200mm	181	1800mm	
127	1260mm	201	2000mm	



SHELF FOR EASY BENCH TOP FRAME

- Melamine resin covered shelf, 28mm thick.
- All sides with 3mm PP plastic edge.
- Depth: 340mm.

ESD Version:



- Surface - and volume conductive 3-layer chipboard according to DIN-EN 61340-5-1.



Shelf for EASY Bench Top Frame

199.BBB.F 00

BBB Standard

080	800mm	148	1485mm
090	900mm	150	1500mm
100	1000mm	160	1600mm
120	1200mm	180	1800mm
126	1260mm	200	2000mm

BBB ESD

081	800mm	149	1485mm
091	900mm	151	1500mm
101	1000mm	161	1600mm
121	1200mm	181	1800mm
127	1260mm	201	2000mm

F Color

5	light grey
8	white
9	beech / maple (not ESD)

EASY SHELVING RACK

modular configuration consisting of:

- L-shaped base made of sheet steel, durable conductive powder coated in light grey. Slotted hole raster (40mm raster) for shelf supports, with fixing holes for the installation on the bench top. Dimensions: 40 x 300 x 800mm (WxDxH).
- Perforated backplane, installed between the L-shaped bases and for the acceptance of tool holders, bin supports, socket strips, etc.
- The cantilevers for the shelves are durable conductive powder coated in light grey with cross stiffening and fixing holes for the assembly of the shelf. Dimensions: 30 x 280mm (WxD).
- Light grey shelf made of 28mm thick melamine resin covered chipboard. Edges with 3mm PP plastic edge and incorporated stop edge (height: 6mm). Depth: 340mm.



ESD Version:

- Surface - and volume conductive 3-layer chipboard according to DIN-EN 61340-5-1.



EASY Shelving Rack

Width

800mm	198.080.505
1000mm	198.100.505
1260mm	198.126.505
1485mm	198.148.505
1600mm	198.160.505
1800mm	198.180.505
2000mm	198.200.505

Cantilevers for Shelf

198.080.510
198.100.510
198.126.510
198.148.510
198.160.510
198.180.510
198.200.510

Shelf with Stop Edge

Standard	ESD
199.080.510	199.081.510 
199.100.510	199.101.510
199.126.510	199.127.510
199.148.510	199.149.510
199.160.510	199.161.510
199.180.510	199.181.510
199.200.510	199.201.510

EASY SHELF RACK WITH TILTED FRONT

- Tilted front, identical to LS2000 instrument racks.
- Body made of 19mm thick melamine resin covered chipboard.
- Depth: 300/385mm, height: 468mm.
- Each shelf compartment with 1x height adjustable shelf board.



EASY Shelf Rack with Tilted Front 215.BBB.F 00

BBB Width

080	800mm	120	1200mm	160	1600mm
090	900mm	126	1260mm	180	1800mm
100	1000mm	148	1485mm	200	2000mm

F Color

5	light grey
8	white
9	beech / maple

EASY SHELF RACK WITH STRAIGHT FRONT

- Body made of 19mm melamine resin covered chipboard.
- Depth: 300mm, height: 470mm.
- Each shelf compartment with 1x height adjustable shelfboard.



EASY Shelf Rack with Straight Front 215.BBB.F 00

BBB Width

081	800mm	121	1200mm	161	1600mm
091	900mm	127	1260mm	181	1800mm
101	1000mm	149	1485mm	201	2000mm

F Color

5	light grey
7	white
8	beech / maple

EASY SHELF RACK WITH LAMP

- Tilted front for the assembly to a LS2000 instrument rack or bench top frame.
- Body made of 19mm thick melamine resin covered chipboard.
- Depth: 500/300mm, height 470mm.
- Each shelf compartment with 1x height adjustable shelf board.
- Upper panel with integrated fluorescent lamp, 36W and switch.



EASY Shelf Rack with Lamp 215.BBB.F 00

BBB Width

082	800mm	122	1200mm	162	1600mm
092	900mm	128	1260mm	182	1800mm
102	1000mm	150	1485mm	202	2000mm

F Color

5	light grey
8	white
9	beech / maple

EASY ADAPTION TO INDIVIDUAL TEACHING CONCEPTS

The EASY program holds a variety of products especially for the efficient configurations of educational laboratories. No matter if you prefer single -, double - or team workstations. Special installation cabins are available for practical trainings in industrial - or domestic wirings. For the respective training sets, please see our catalogue for technical training systems.



EASY SUPPORT FOR TRAINING SYSTEM FRAME, TILTED

- Bench top frame made of two L-Braces 40 x 40mm, tilted by 15°.
- Prepared for 1 level training system frame or installation wall (not included, please choose separately!).
- Durable powder coating.
- Depth: 285mm, height: 370mm.

EASY Support, Tilted	
170.001.801	1 Level, no Handle
170.001.851	1 Level, with Handle



EASY L-SUPPORT FOR TRAINING SYSTEM FRAME

- Two L-Braces made of 40 x 40mm tubular steel and fixing screw. The training system frame can be removed from the bench top.
- Prepared for training system frame or installation wall (not included, please choose separately!).
- Durable powder coating.
- Depth: 295mm.

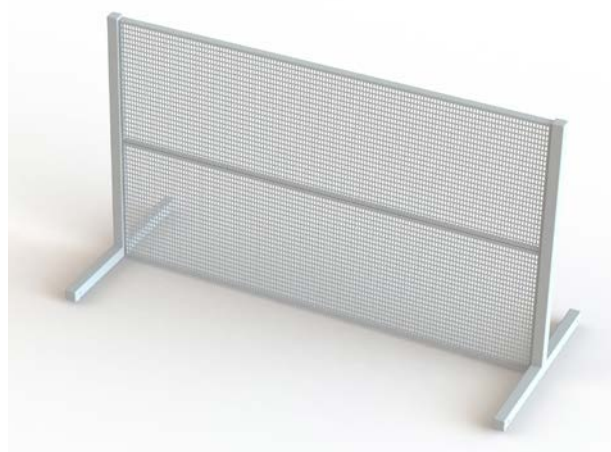
EASY L- Support for Training System Frame	
170.001.901	1 Level H: 360mm
170.002.901	2 Levels H: 680mm
170.003.901	3 Levels H: 1000mm



EASY T-SUPPORT FOR TRAINING SYSTEM FRAME

- Two T-Braces made of 40 x 40mm tubular steel, lower side with rubber feed for the flexible use on bench tops.
- Prepared for training system frame or installation wall (not included, please choose separately!).
- Durable powder coating.
- Depth: 300mm. ining system frame not included.
- Training system frame not included.

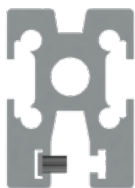
EASY T-Support for Training System Frame	
171.001.900	1 Level H: 360mm
171.002.900	2 Levels H: 680mm
171.003.900	3 Levels H: 1000mm



TRAINING SYSTEM FRAME

- H-Profile in DIN A4 height to hang up training panels in standard size. Durable light grey powder coated.
- Lower side with incorporated brush strip for clatter-free use.
- Front - and rear side with slots for sliding nuts.
- With side parts, prepared for the assembly to the EASY training system frame.
- Suitable for all type of hera supports.
- Dimensions: 26 x 37mm (DxH).

V-slot for tight fitting to training systems



incorporate brush for clatter-free utilization



Training System Frame

461. **BB** **H** .90 **O**

BB Width

05	500mm	09	900mm	13	1295mm	18	1800mm
06	603mm	10	1000mm	15	1500mm	20	2000mm
08	800mm	12	1200mm	16	1600mm	23	2303mm

H Height

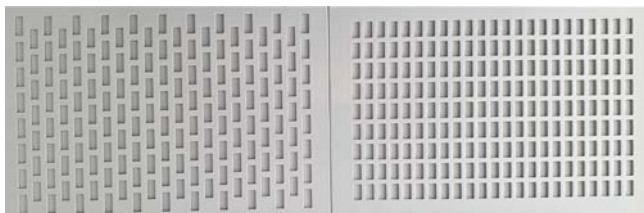
1	360mm
2	680mm
3	1000mm

O H-Profile

0	aluminium anodized
2	powder coated

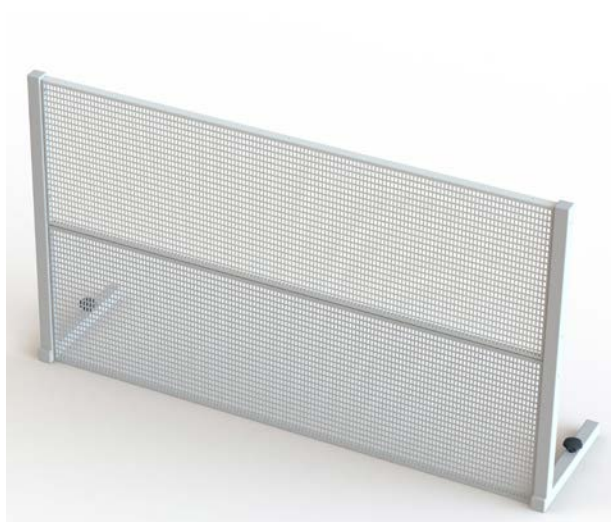
INSTALLATION WALL, FIRMLY MOUNTED

- Sheet steel with 1,5mm bending for surrounding reinforcement and durable light grey powder coating.
- Raster dimensions are 12x5 (hera specific) or 10x5mm (universally for hera and other brands in suitable raster).



hera-Raster (5 x 12mm)

E-Raster (5 x 10mm)



hera-grid

Installation Walls, firmly mounted

461. **BB** **H** .10 **R**

BB Width

05	500mm	09	900mm	13	1295mm	18	1800mm
06	603mm	10	1000mm	15	1500mm	20	2000mm
08	800mm	12	1200mm	16	1600mm	23	2303mm

H Height

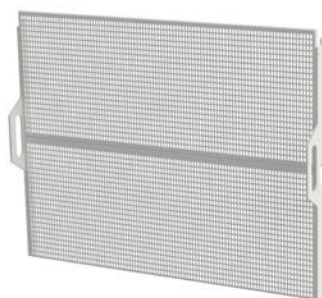
1	360mm
2	680mm
3	1000mm

R

0	hera-Raster
1	E-Raster

INSTALLATION WALL FOR TRAINING BOXES

- The installation wall is prepared for the acceptance in training system frames. It is used for practical trainings with training boxes or surfacemount installation material with dowel-fixation.
- Made of 1,5mm sheet steel with surrounding reinforcement. Durable light grey powder coated.
- 2 level version with handles for comfortable use.



Installation Wall for Training System Frame 461. **BB** **E** .10 **R**

BB Width	E Level	R Grid
06 600mm	1 1 Level	3 hera Grid 12 x 5mm
08 800mm	2 2 Levels	4 E-Grid 10 x 5mm



Installation Wall for 1 level and 2 levels

WOODEN INSTALLATION PANEL FOR TRAINING SYSTEM FRAME

- 19mm plywood.
- Incl. brackets and fixing screw for training system frame.

Wooden Installation Panel 461. **BB** **E** .800

BB Width	E Level
08 800mm	2 2 levels (H: 680mm)
12 1200mm	3 3 levels (H: 1000mm)



INSTALLATION DOWEL FOR INSTALLATION WALL

- 100pcs. dowels for installation wall.
- incl. panhead screw.
- Length: 9,5mm.



Set of Installation Dowels

301.150.100



INSTALLATION CABIN

- The installation cabin offers a most realistic training environment for domestic or industrial installations.
- The frame is made of anodized aluminium profile with incorporated installation walls. The cabin is ready to accommodate a modular equipped media channel.
- Durable, light grey powder coating.
- Dimensions: 1200 x 1000 x 2000mm (WxDxH).

Other dimensions on demand!



Installation Cabin

461.600.000



TFT CHEST

- Electric driven retractable VESA monitor support max. 24" and 80mm depth.
- Storing room for keyboard and mouse.
- Controlled by wired remote control.
- Body made of light grey 19mm melamine resin covered chipboard with service flap and cable access for the connection between computer and monitor.
- The chest is with self-opening and -closing lid, optionally with electric lock.
- Dimensions: 170 x 780mm (DxH).

TFT Chest

425.900.200	double (width: 1800 or 2000)
425.900.210	single (width: 900 or 1000)
425.900.290	Option Electric Lock

Theory - and Computer Bench

- fast and silent operating monitor lifts
- optional with electric lock for theft protection

